

# Chapter 1

# Population, Marriage and Family



## 1.1 Proportion of Youth in Total Population

**Table 1.1a : Distribution of Youth Population Aged 13-29 by Age (2003-2008)**

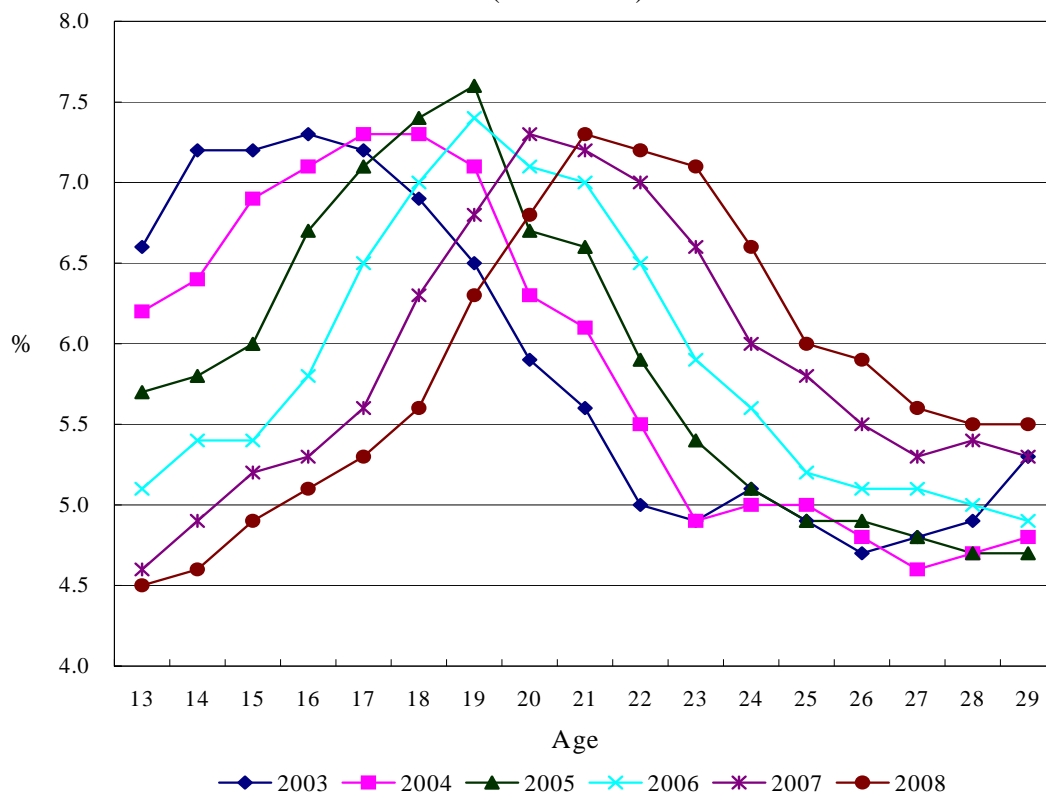
Age	2003	2004	2005	2006	2007	2008
13	6.6	6.2	5.7	5.1	4.6	4.5
14	7.2	6.4	5.8	5.4	4.9	4.6
15	7.2	6.9	6.0	5.4	5.2	4.9
16	7.3	7.1	6.7	5.8	5.3	5.1
17	7.2	7.3	7.1	6.5	5.6	5.3
18	6.9	7.3	7.4	7.0	6.3	5.6
19	6.5	7.1	7.6	7.4	6.8	6.3
20	5.9	6.3	6.7	7.1	7.3	6.8
21	5.6	6.1	6.6	7.0	7.2	7.3
22	5.0	5.5	5.9	6.5	7.0	7.2
23	4.9	4.9	5.4	5.9	6.6	7.1
24	5.1	5.0	5.1	5.6	6.0	6.6
25	4.9	5.0	4.9	5.2	5.8	6.0
26	4.7	4.8	4.9	5.1	5.5	5.9
27	4.8	4.6	4.8	5.1	5.3	5.6
28	4.9	4.7	4.7	5.0	5.4	5.5
29	5.3	4.8	4.7	4.9	5.3	5.5
<b>Total</b>	100.0	100.0	100.0	100.0	100.0	100.0

**Source: Statistics and Census Bureau.**

*Note: (1) Reference date: 31 December of each year.*

*(2) Due to rounding, slight discrepancy may occur in the sum of individual items and the total.*

Figure 1.1a: Distribution of Youth Population Aged 13-29 by Age (2003-2008)



**Table1.1b: Distribution of Youth Population Aged 13-29 (2003-2008)**

'000

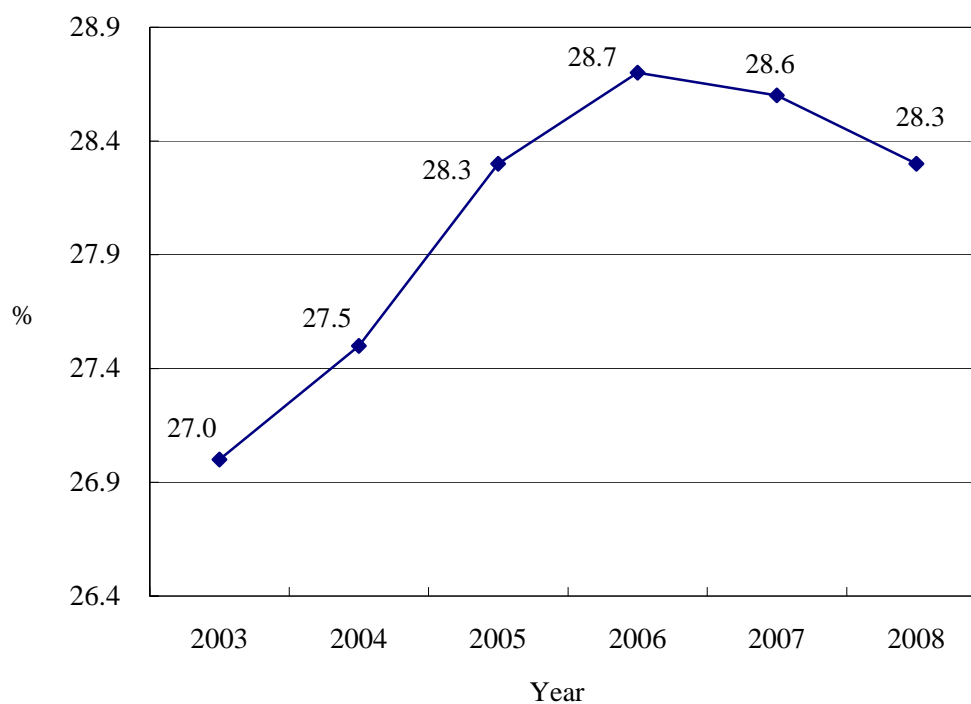
Age Group	2003	2004	2005	2006	2007	2008
<b>13-29</b>	120.4 (27.0)	127.2 (27.5)	136.8 (28.3)	147.2 (28.7)	153.8 (28.6)	155.4 (28.3)
<b>Total</b>	446.7 (100.0)	462.6 (100.0)	484.3 (100.0)	513.4 (100.0)	538.1 (100.0)	549.2 (100.0)

**Source: Statistics and Census Bureau.**

*Note: (1) Reference date: 31 December of each year.*

*(2) Figures in parentheses represent percentages in respect of the total population.*

**Figure 1.1b: Distribution of Youth Population Aged 13-29 (2003-2008)**



**Table 1.1c : Distribution of Youth Population Aged 13-29 by Sex (2003-2008)**

'000

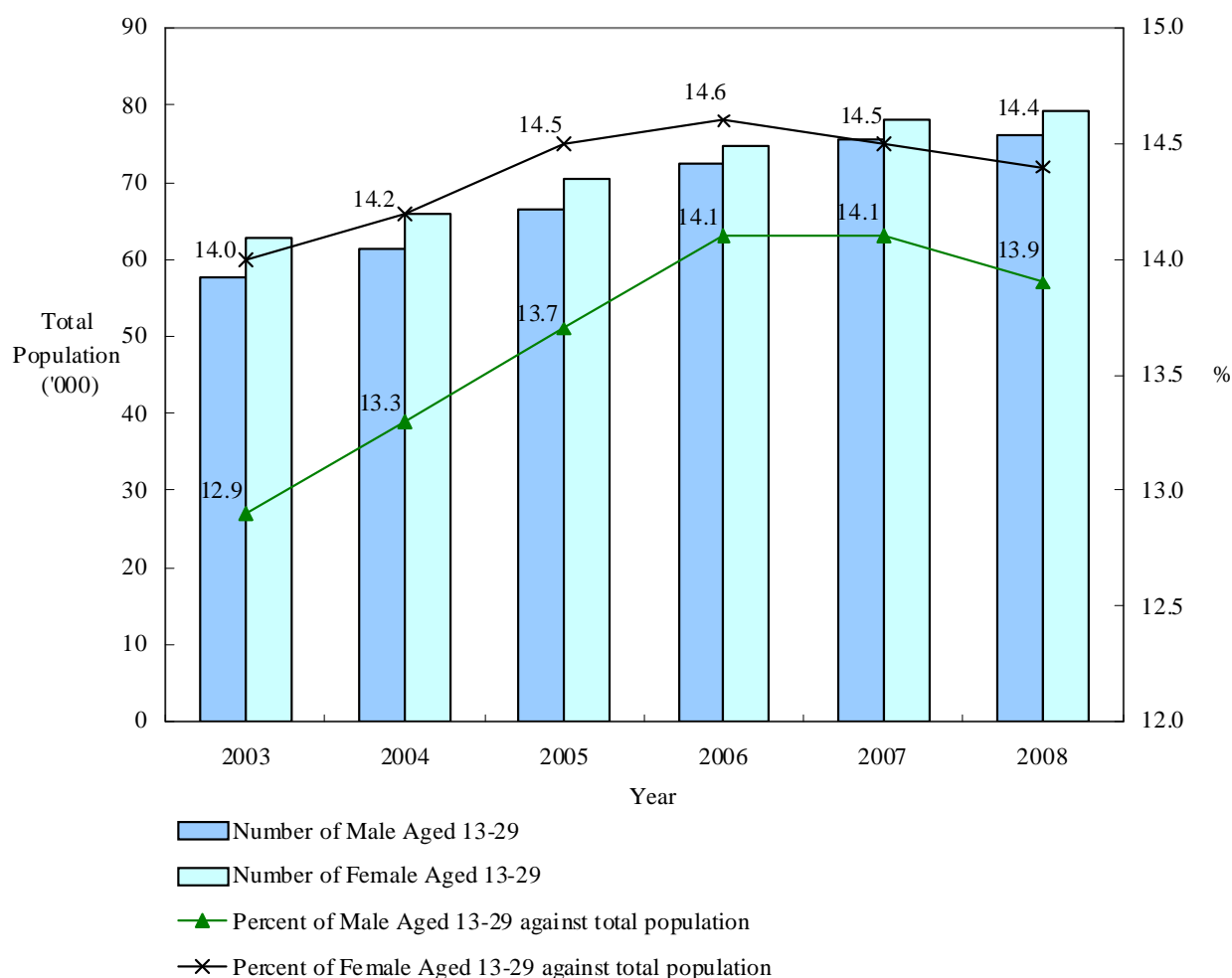
Age Group	2003		2004		2005		2006		2007		2008	
	Male	Female	Male	Female	Male	Female	Male	Female	Male	Female	Male	Female
<b>13-29</b>	57.7 (12.9)	62.7 (14.0)	61.4 (13.3)	65.9 (14.2)	66.5 (13.7)	70.3 (14.5)	72.5 (14.1)	74.7 (14.6)	75.7 (14.1)	78.1 (14.5)	76.3 (13.9)	79.1 (14.4)
<b>Total</b>	446.7 (100.0)		462.6 (100.0)		484.3 (100.0)		513.4 (100.0)		538.1 (100.0)		549.2 (100.0)	

Source: Statistics and Census Bureau.

Note: (1) Reference date: 31 December of each year.

(2) Figures in parentheses represent percentages in respect of the total population.

**Figure 1.1c : Distribution of Youth Population Aged 13-29 by Sex (2003-2008)**



## 1.2 Composition of Youth Population

Table 1.2 : Statistics on Youth Population Aged 13-29 by Age (2003-2008)

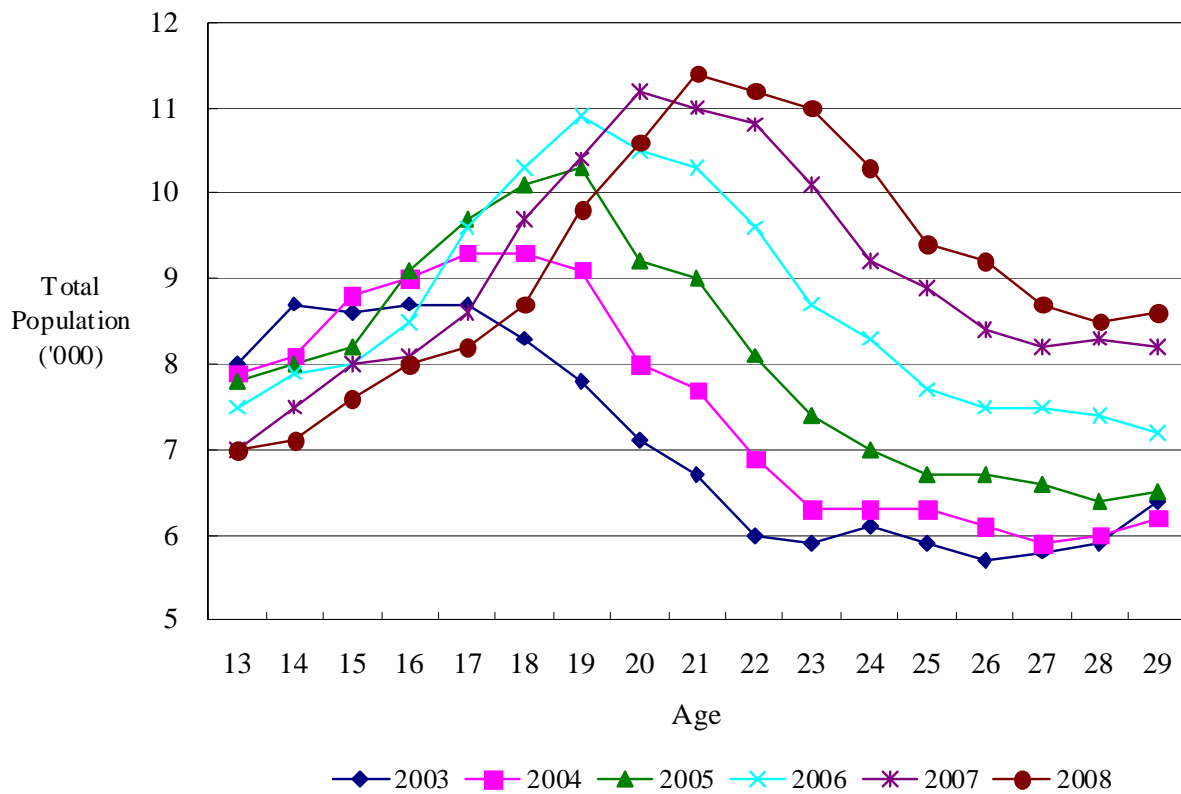
	'000					
Age	2003	2004	2005	2006	2007	2008
13	8.0	7.9	7.8	7.5	7.0	7.0
14	8.7	8.1	8.0	7.9	7.5	7.1
15	8.6	8.8	8.2	8.0	8.0	7.6
16	8.7	9.0	9.1	8.5	8.1	8.0
17	8.7	9.3	9.7	9.6	8.6	8.2
18	8.3	9.3	10.1	10.3	9.7	8.7
19	7.8	9.1	10.3	10.9	10.4	9.8
20	7.1	8.0	9.2	10.5	11.2	10.6
21	6.7	7.7	9.0	10.3	11.0	11.4
22	6.0	6.9	8.1	9.6	10.8	11.2
23	5.9	6.3	7.4	8.7	10.1	11.0
24	6.1	6.3	7.0	8.3	9.2	10.3
25	5.9	6.3	6.7	7.7	8.9	9.4
26	5.7	6.1	6.7	7.5	8.4	9.2
27	5.8	5.9	6.6	7.5	8.2	8.7
28	5.9	6.0	6.4	7.4	8.3	8.5
29	6.4	6.2	6.5	7.2	8.2	8.6
<b>Total</b>	120.4	127.2	136.8	147.2	153.8	155.4

Source: Statistics and Census Bureau.

Note: (1) Reference date: 31 December of each year.

(2) Due to rounding, slight discrepancy may occur in the sum of individual items and the total.

Figure 1.2: Statistics on Youth Population Aged 13-29 by Age (2003-2008)



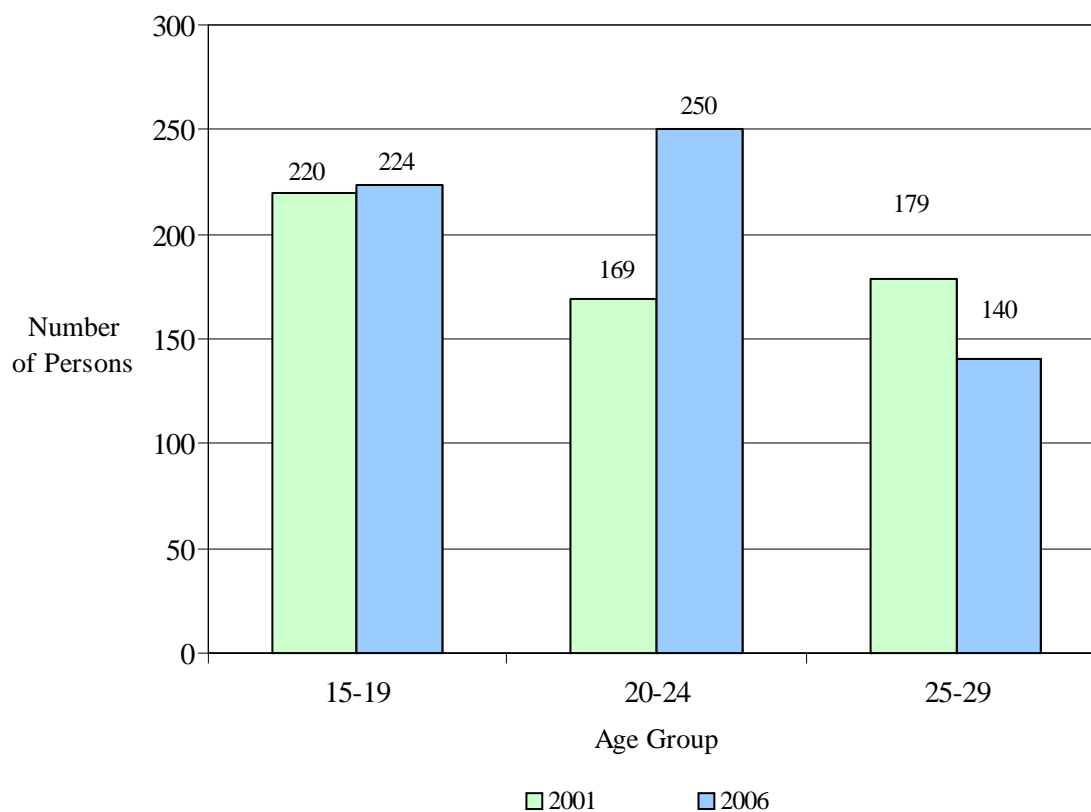
## 1.3 Disabled Youth Population

**Table 1.3 : Statistics on Disabled Resident Population Aged 15-29 (2001, 2006)**

Age Group	2001	2006
15-19	220	224
20-24	169	250
25-29	179	140
<b>Total</b>	<b>568</b>	<b>614</b>

Source: Statistics and Census Bureau.

**Figure 1.3 : Statistics on Disabled Resident Population Aged 15-29 (2001, 2006)**





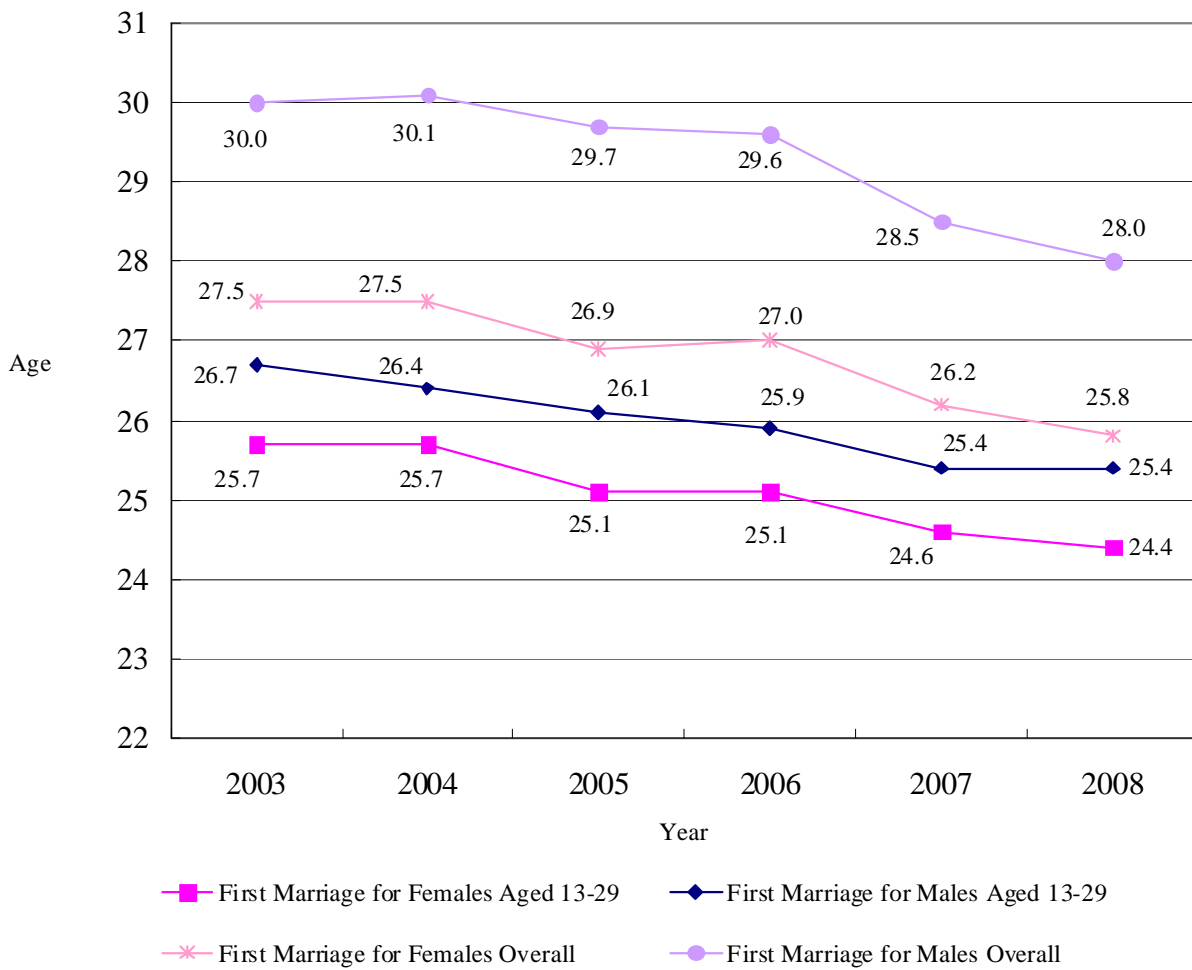
## 1.4 Average Age at First Marriage

Table 1.4: Average Age at First Marriage (2003-2008)

	Median Age					
	2003	2004	2005	2006	2007	2008
<b>First Marriage for Females Aged 13-29</b>	25.7	25.7	25.1	25.1	24.6	24.4
<b>First Marriage for Males Aged 13-29</b>	26.7	26.4	26.1	25.9	25.4	25.4
<b>First Marriage for Females Overall</b>	27.5	27.5	26.9	27.0	26.2	25.8
<b>First Marriage for Males Overall</b>	30.0	30.1	29.7	29.6	28.5	28.0

Source: Statistics and Census Bureau.

Figure 1.4: Average Age at First Marriage (2003-2008)



## 1.5 Statistics on Household

**Table 1.5: Statistics on Households with Members Aged 15-29 by Household <sup>(1)</sup> Composition (2001, 2006)**

Household Composition	Total	Percentage of Total Households with Members Aged 15-29	
		2001	2006
<b>Total</b>	100.0%	44.2%	47.0%
<b>Single-person Household <sup>(2)</sup></b>	100.0%	21.0%	18.2%
<b>Nuclear <sup>(3)</sup> Household</b>	100.0%	48.0%	53.4%
<b>Non-nuclear <sup>(3)</sup> Household</b>	100.0%	60.8%	54.2%

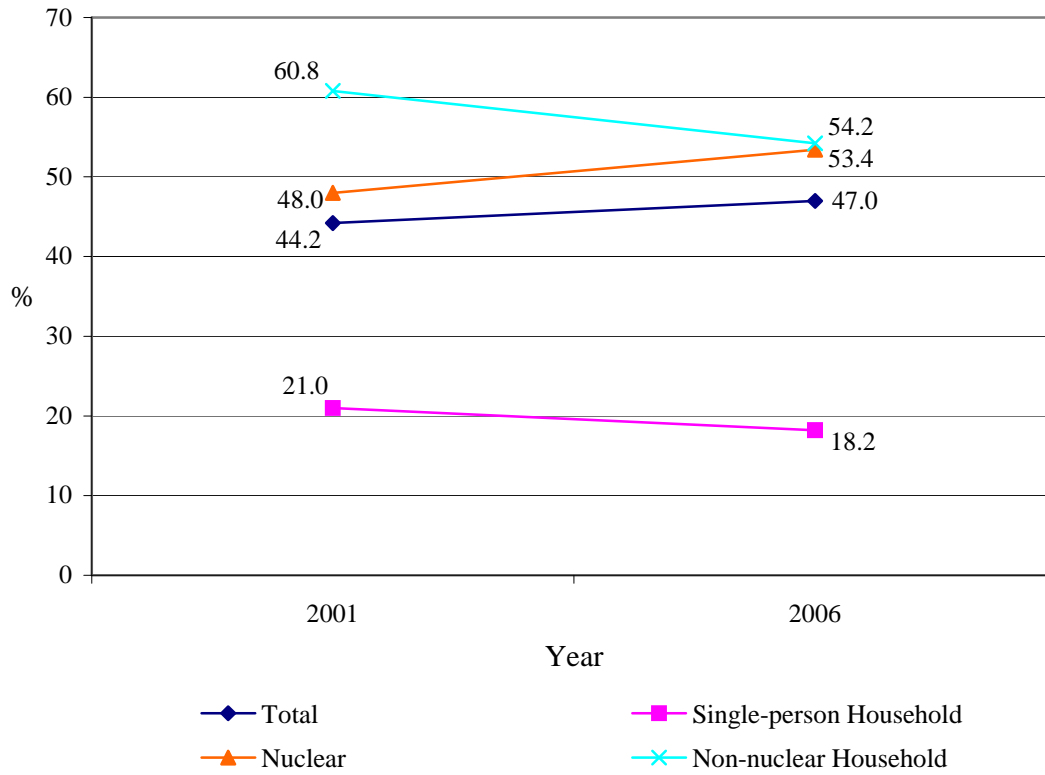
**Source: Statistics and Census Bureau.**

*Note: (1) Household: a unit composed of members who live together, have meals together and share common property. Members of a household do not necessarily have any kinship ties, but would share part of the entire living unit; a person living alone and all by himself/herself is also considered a household.*

*(2) Single-person household: a household with only one member.*

*(3) Family nucleus: refers to a married couple with no children or with unmarried children; also refers to a single parent (father or mother) with unmarried children.*

Figure 1.5: Statistics on Households with Members Aged 15-29 by Household Composition (2001, 2006)



## 1.6 Statistics on Single Parent Families

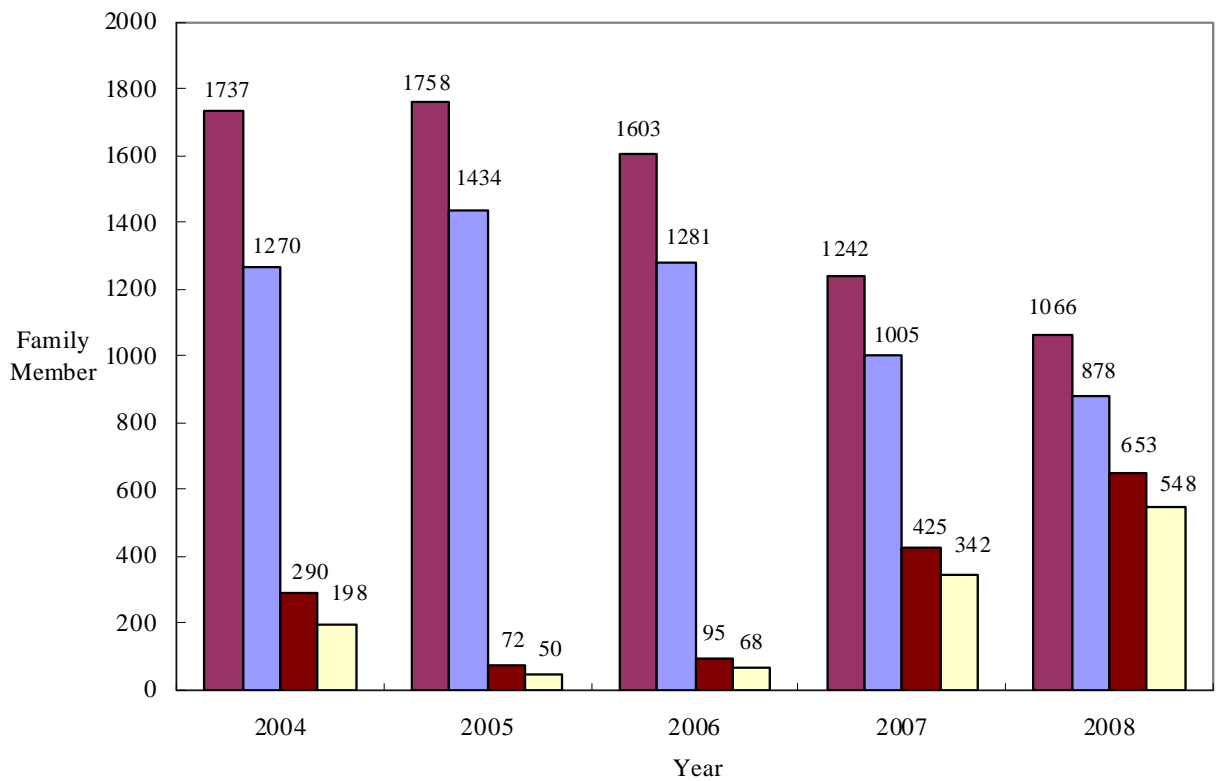
**Table 1.6: Single Parent Families with Members Aged 13-29 (2004-2008)**

	Single-Parent Family (Number)					Single-Parent Family with Members Aged 13-29 (Number)				
	2004	2005	2006	2007	2008	2004	2005	2006	2007	2008
<b>Families Receiving Single-Parent Financial Assistance from the Social Welfare Bureau</b>	1737	1758	1603	1242	1066	1270	1434	1281	1005	878
<b>Single-Parent Families Support Network (Families not on Single-Parent Financial Assistance Provided by the Social Welfare Bureau)</b>	290	72	95	425	653	198 <sup>(1)</sup>	50 <sup>(1)</sup>	68 <sup>(1)</sup>	342 <sup>(1)</sup>	548 <sup>(1)</sup>
<b>Total</b>	2027	1830	1698	1667	1719	1468	1484	1349	1347	1426

**Source: Social Welfare Bureau.**

*Note: (1) Based only on the year of birth of the first child of the family.*

Figure 1.6: Single-Parent Families with Members Aged 13-29  
(2004-2008)



- Families Receiving Single-Parent Financial Assistance from the Social Welfare Bureau
- Families with Members Aged 13-29 Receiving Single-Parent Financial Assistance from the Social Welfare Bureau
- Single Parent Families Support Network (Families not on Single-Parent Financial Assistance Provided by the Social Welfare Bureau)
- Single Parent Families Support Network (Families with Members Aged 13-29 not on Single-Parent Financial Assistance Provided by the Social Welfare Bureau)

## 1.7 Average Number of Children per Family

**Table 1.7: Average Number of Members Aged 15-29 by Household <sup>(1)</sup> Composition (2001, 2006)**

Household Composition	Average Number of Persons	
	2001	2006
Single-person Household <sup>(2)</sup>	0.21	0.18
Nuclear <sup>(3)</sup> Household	0.73	0.85
Non-nuclear <sup>(3)</sup> Household	1.38	1.03

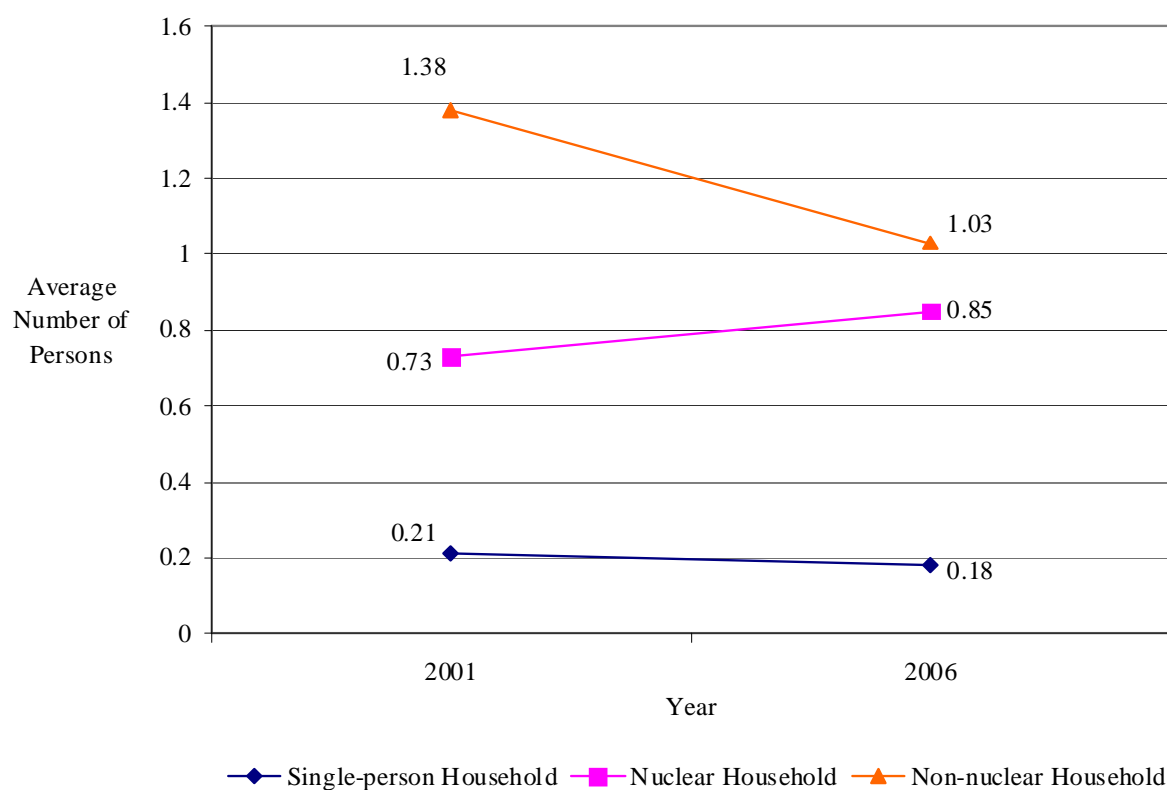
Source: Statistics and Census Bureau.

Note: (1) Household: a unit composed of members who live together, have meals together and share common property. Members of a household do not necessarily have any kinship ties, but would share part of the entire living unit; a person living alone and all by himself/herself is also considered a household.

(2) Single-person household: a household with only one member.

(3) Family nucleus: refers to a married couple with no children or with unmarried children; also refers to a single parent (father or mother) with unmarried children.

**Figure 1.7: Average Number of Members Aged 15-29 by Household Composition (2001, 2006)**



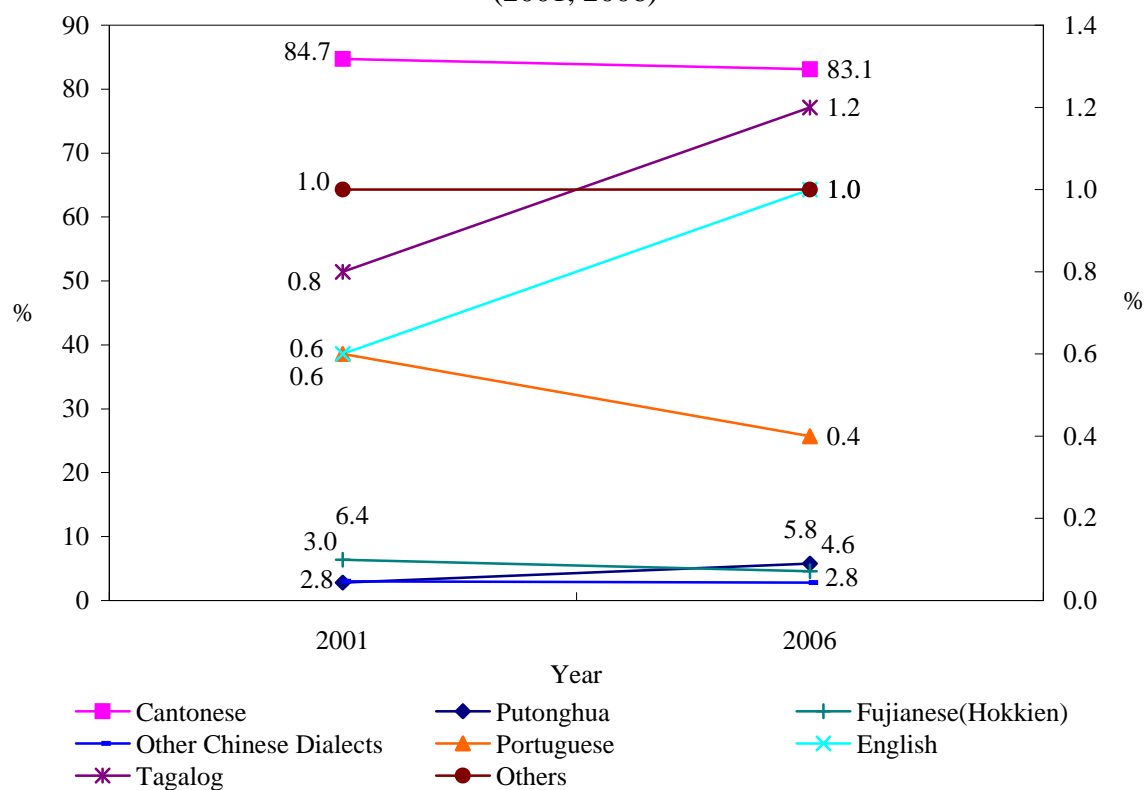
## 1.8 Common Languages Used in Family

Table 1.8: Most Common Language Spoken by Youths Aged 15-29 (2001, 2006)

Language	Number of Persons		Percent	
	2001	2006	2001	2006
<b>Cantonese</b>	81907	106663	84.7	83.1
<b>Putonghua</b>	2747	7475	2.8	5.8
<b>Fujianese (Hokkien)</b>	6231	5940	6.4	4.6
<b>Other Chinese Dialects</b>	2929	3609	3.0	2.8
<b>Portuguese</b>	550	568	0.6	0.4
<b>English</b>	582	1232	0.6	1.0
<b>Tagalog</b>	818	1599	0.8	1.2
<b>Others</b>	986	1276	1.0	1.0
<b>Total</b>	96750	128362	100.0	100.0

Source: Statistics and Census Bureau.

Figure 1.8: Most Common Language Spoken by Youths Aged 15-29 (2001, 2006)



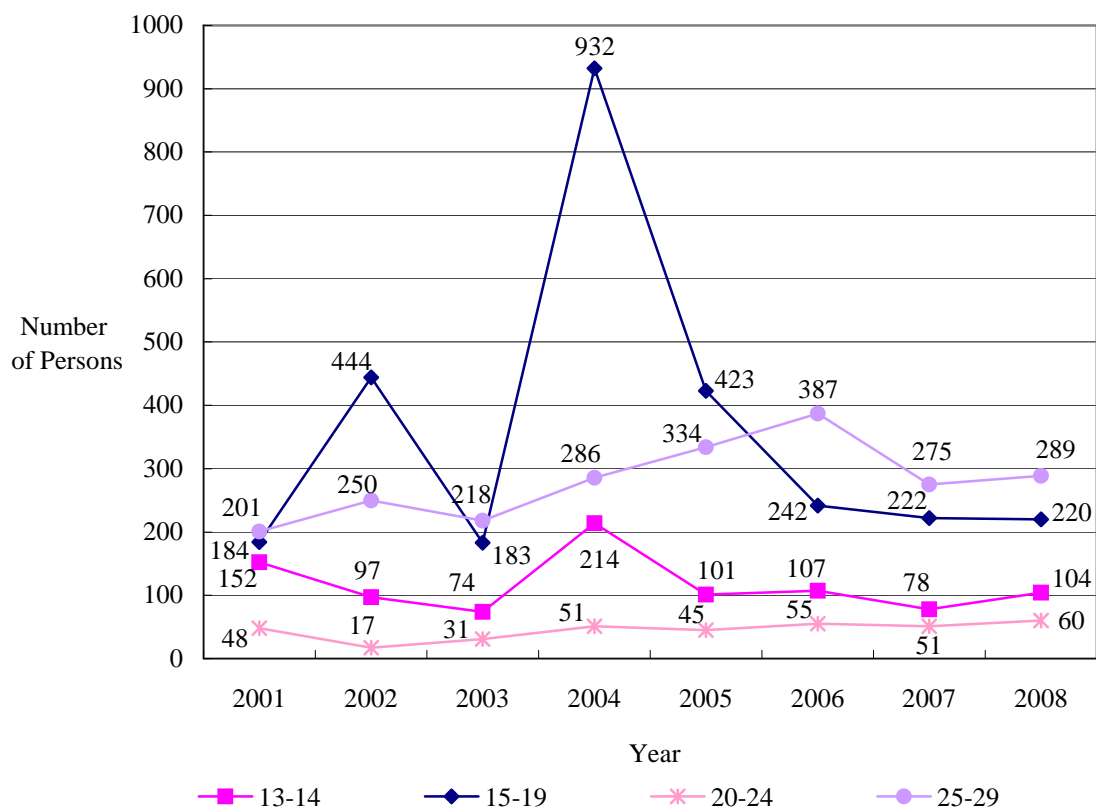
## 1.9 Distribution of New Immigrants

Table 1.9: Legal Immigrants Aged 13-29 from Mainland China (2001-2008)

Age Group	2001	2002	2003	2004	2005	2006	2007	2008
13-14	152	97	74	214	101	107	78	104
15-19	184	444	183	932	423	242	222	220
20-24	48	17	31	51	45	55	51	60
25-29	201	250	218	286	334	387	275	289
<b>Total</b>	<b>585</b>	<b>808</b>	<b>506</b>	<b>1483</b>	<b>903</b>	<b>791</b>	<b>626</b>	<b>673</b>

Source: Statistics and Census Bureau. (Data provided by the Public Security Police Force).

Figure 1.9: Legal Immigrants Aged 13-29 from Mainland China (2001-2008)





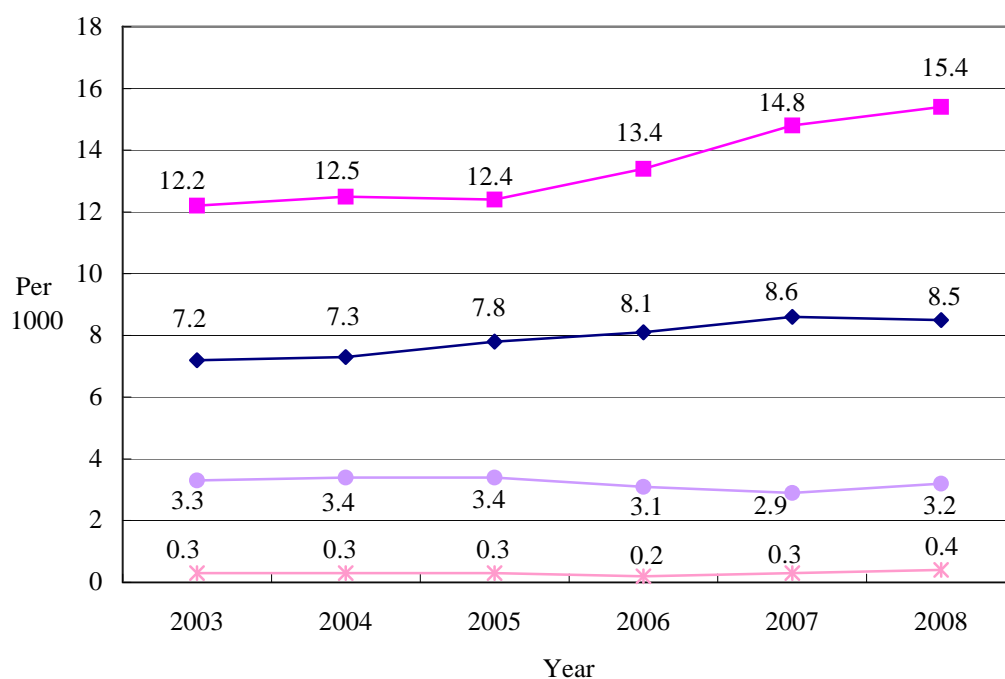
## 1.10 Fertility Rates and Mortality Rates

Table 1.10: Fertility Rates and Mortality Rates (2003-2008)

	Per mil					
	2003	2004	2005	2006	2007	2008
<b>Number of Live Births by Females Aged 13-29 vs. Average Total Youth Population Aged 13-29</b>	12.2	12.5	12.4	13.4	14.8	15.4
<b>Fertility Rate (Overall)</b>	7.2	7.3	7.8	8.1	8.6	8.5
<b>Number of Deaths Aged 13-29 vs. Average Total Youth Population Aged 13-29</b>	0.3	0.3	0.3	0.2	0.3	0.4
<b>Mortality Rate (Overall)</b>	3.3	3.4	3.4	3.1	2.9	3.2

Source: Statistics and Census Bureau.

Figure 1.10: Fertility Rates and Mortality Rates (2003-2008)



- Number of Live Births by Females Aged 13-29 vs. Average Total Youth Population Aged 13-29
- ◆— Fertility Rate (Overall)
- \*— Number of Deaths Aged 13-29 vs. Average Total Youth Population Aged 13-29
- Mortality Rate (Overall)

## 1.11 Marriage Rates and Divorce Rates

Table 1.11: Marriage Rates and Divorce Rates (2003-2008)

	Per mil					
Marriage Rates and Divorce Rates	2003	2004	2005	2006	2007	2008
Marriage Rate (Aged 13-29)	7.7	9.9	9.3	10.4	10.0	13.7
Marriage Rate (Overall)	3.0	3.8	3.7	4.2	3.9	5.0
Divorce Rate (Aged 13-29)	0.6	0.7	0.7	0.7	0.6	0.5
Divorce Rate (Overall)	1.0	1.0	1.2	1.2	1.3	1.2

Source: Statistics and Census Bureau.

Figure 1.11: Marriage Rates and Divorce Rates (2003-2008)

