



FIJI DATA PROVISIONS – CEDAW COMMITTEE 2018

Table of Contents:

A. Ministry of Education – Data Sets:

<u>List of Tables:</u>	<u>Page:</u>
Table 1: Early Childhood Education (ECE) 2018	3
Table 2: Primary Education 2018	
Table 3: Secondary Education 2018	4
Table 4: Total Number of Students	
Table 5: Enrolment Rates by School Levels.	5
Table 6: Fiji Year 12 Certificate Examination	
Table 7: Fiji Year 13 Certificate Examination	6
Table 8: Number of Teachers	
Table 9: School Heads	7
Table 10: Higher Education	

<u>List of Figures:</u>	<u>Page:</u>
Figure 1: Number of Students Awarded the Tertiary Loans Scheme	7
Figure 2: Number of Students Awarded the National Toppers Scheme	8

B. Ministry of Health & Medical Services – Data Sets:

<u>List of Tables:</u>	<u>Page:</u>
Table 1: Fiji's Health Services Status 2016	8
Table 2: Adolescent Data 2016	9
Table 3: School Health Report	

C. Office of The Director of Public Prosecution – Data Set:

<u>List of Tables:</u>	<u>Page:</u>
Table 1: ODPP Rape and Sexual Offences Statistics – 1 January to 31 December 2017	11

<u>List of Figures:</u>	<u>Page:</u>
<i>Figure 1: Total Offences, Number of Accused & Victims – 1 January to 31 December 2017</i>	12
<i>Figure 2: Total Victims based on Gender – 1 January to 31 December 2017</i>	13
<i>Figure 3: Total Victims based on Gender per month –1 January to 31 December 2017</i>	13

D. Fiji Islands Bureau of Statistics – Population Aged 15 & Above With Bank Accounts

<u>List of Tables:</u>	<u>Page:</u>
Table 1: Population Aged 15 & Above with Bank Account by Division, Urban & Rural 2017	14

E. Reference	15
---------------------	-----------

A. Ministry of Education – Data Sets:

Table 1: Early Childhood Education (ECE) 2018

Description	Value
No. of ECE Centre's	866
5 year old students	18,408
Teachers	1289
Student-Teacher ratio	1:16
Infant Schools	9
Subsidized ECE Tuition Fee Grant	\$2.1m

(Source: Ministry of Education 2018)

Table 2: Primary Education 2018

Description	Value
No. of Primary schools	736
Male Students	76171
Female Students	70650
Total Students	146,821
Teachers	5694
Student-Teacher ratio	1:26
Completion Rate- Male	107%
Completion Rate- Female	108.4%
Completion Rate- Total	107.7%
Net Enrolment Rate – Male	100%
Net Enrolment Rate – Female	100%
Net Enrolment Rate – Total	100%
Numeracy Rate for Year 7	
Advanced	5%
Proficient	17%
Basic	58%
Critical	21%
Literacy Rate for Year 7	
Advanced	17%
Proficient	17%
Basic	55%
Critical	11%
Retention Rate – Male	93%
Retention Rate-Female	97%
Retention Rate-Total	95%

(Source: Ministry of Education 2018)

Table 3: Secondary Education 2018

Description	Value
No. of Secondary Schools	176
Male Student	31582
Female Student	34650
Total Student	66232
Teachers	5144
Student-Teacher ratio	1:13
Completion Rate- Male	70.4%
Completion Rate- Female	91.8%
Completion Rate- Total	81.1%
Net Enrolment Rate – Male	78.8%
Net Enrolment Rate – Female	90.9%
Net Enrolment Rate – Total	84.9%
Retention Rate – Male	77%
Retention Rate-Female	92%
Retention Rate-Total	84.5%

(Source: Ministry of Education)

Table 4: Total Number of Students

Number of Students	Females	Males	Total
ECE²⁰¹⁷	7862	8286	16148
ECE²⁰¹⁸			18408
Primary²⁰¹⁷	70270	75655	145925
Primary²⁰¹⁶	68761	73793	142554
Primary²⁰¹⁵	68296	73517	141813
Secondary²⁰¹⁷	34650	31582	66232
Secondary²⁰¹⁶	34056	31806	65862
Secondary²⁰¹⁵	34693	32754	67447

(Source: FEMIS 2017)

Gender wise, there is no significant difference in the net enrollment for females and males for Primary Education whereas for Secondary education, female net enrolment is higher than males as illustrated in Table 5 below.

Table 5: Enrolment Rates by School Levels.

Enrollment Rates	Net Enrollment			Gross Enrollment		
	Total	Females	Males	Total	Females	Males
ECE						
Primary ²⁰¹⁵	100	100	100	109.2	109	109.4
Primary ²⁰¹⁶	100	99.9	100	104.6	103.9	105.2
Primary ²⁰¹⁷	100	100	100	106.7	104.7	106.9
Secondary ²⁰¹⁵	83.7	88.1	79.2			
Secondary ²⁰¹⁶	85.5	90.5	80.5	97.6	103.4	91.7
Secondary ²⁰¹⁷	84.9	90.9	78.8	96.2	103.2	89.1

(Source: FEMIS Data 2017)

Table 6: Fiji Year 12 Certificate Examination

FY12CE 2017 Subject	Female			Male		
	N	N	%	N	N	%
	Sat	Pass	Pass	Sat	Pass	Pass
ENGLISH	6822	5869	86%	5525	4142	75%
MATHEMATICS	6686	2434	36%	5360	1864	35%
BIOLOGY	2847	1664	58%	1086	631	58%
CHEMISTRY	2520	1306	52%	1220	670	55%
PHYSICS	906	550	61%	1933	869	45%
GEOGRAPHY	2136	1492	70%	1285	878	68%
HISTORY	1551	797	51%	882	463	52%
ACCOUNTING	1737	948	55%	823	449	55%
ECONOMICS	2216	1421	64%	1137	656	58%
OFFICE TECHNOLOGY	484	465	96%	174	160	92%
AGRICULTURAL SCIENCE	1372	1120	82%	1358	950	70%
TECHNICAL DRAWING	176	172	98%	2333	2286	98%
COMPUTER STUDIES	1763	1671	95%	1736	1552	89%
HOME ECONOMICS	1245	1188	95%	103	93	90%
APPLIED TECHNOLOG	66	65	98%	1532	1513	99%
NA VOSA VAKA VITI	1337	1229	92%	787	658	84%
HINDI	75	71	95%	30	30	100%
URDU	15	14	93%	12	11	92%
FRENCH	5	4	80%	4	3	75%

(Source: Examination Unit, Ministry of Education)

Table 7: Fiji Year 13 Certificate Examination

FIJI YEAR 13 CERTIFICATE 2017 Subject	Female			Male		
	N Sat	N Pass	% Pass	N Sat	N Pass	% Pass
ENGLISH	4422	3800	86%	3292	2344	71%
MATHEMATICS	4257	1818	43%	3137	1375	44%
PHYSICS	723	405	56%	1246	524	42%
INTRODUCTION TO TECHNOLOGY	126	126	100%	1376	1361	99%
COMPUTER STUDIES	1121	1093	98%	1371	1316	96%
URDU	17	17	100%	7	7	100%
ECONOMICS	1425	822	58%	809	485	60%
ACCOUNTING	1090	645	59%	605	376	62%
VOSA VAKAVITI	749	742	99%	483	463	96%
AGRICULTURAL SCIENCE	851	804	94%	751	654	87%
BIOLOGY	1999	910	46%	690	356	52%
HISTORY	936	442	47%	496	251	51%
GEOGRAPHY	1357	1020	75%	772	593	77%
CHEMISTRY	1822	1184	65%	811	553	68%
OFFICE TECHNOLOGY	231	230	100%	118	113	96%
HOME ECONOMICS	753	746	99%	72	67	93%
HINDI	54	54	100%	22	22	100%

(Source: Examination Unit, Ministry of Education)

Table 8: Number of Teachers

Number of teachers	Females	Males	Total
ECE	1329	37	1366
Primary	3613	2416	6029
Secondary	2920	2332	5252
TOTAL	7862	4785	12647

(Source: FEMIS Data 2017)

Table 9: School Heads

	Principal	Head Teachers	Total
Females	29 (16.7%)	182 (25.8%)	211
Males	144 (83.3%)	522 (74.2%)	666
Total	173	704	877

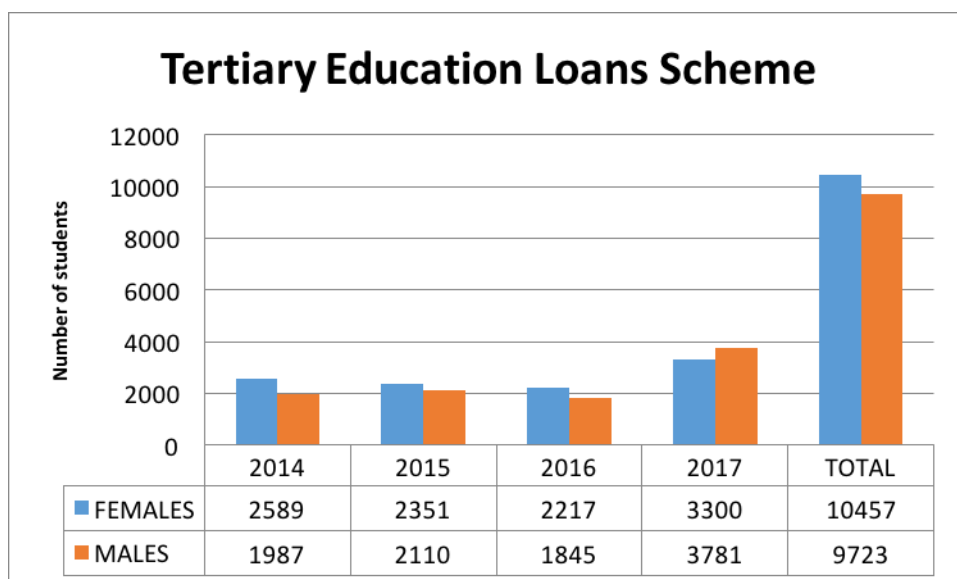
(Source: FEMIS Data 2017)

Table 10: Higher Education

Gender	Tertiary Participation			Tertiary Graduation/ Completion		
	2015	2016	2017	Total	2015	2016
Male	15851	17311	15807	48969	4129	3747
Female	18349	19496	18773	56618	4443	4534
Total	34200	36807	34580	105587	8572	8281

(Source: Fiji Higher Education Commission 2018))

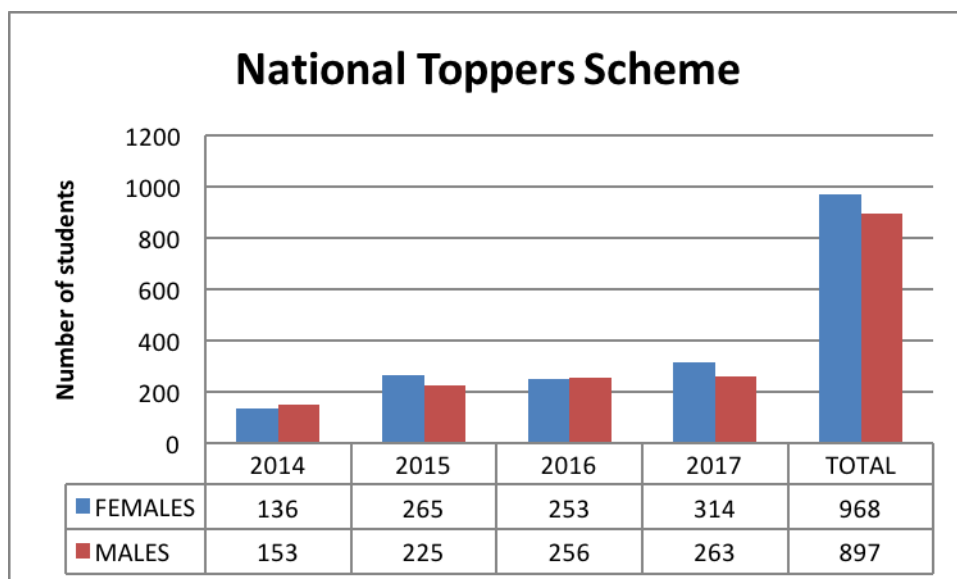
Figure 1: Number of Students Awarded the Tertiary Loans Scheme



(Source: TSLB 2018)

Out of the 20,180 students who were awarded the Tertiary Loan Schemes since its inception in 2014, 51.8% are females and similarly out of the 1865 students for the National Toppers Scheme 51.9% females. Figure 1 & 2. This is indicative of the Government commitment in ensuring that the same opportunities are given to females to benefit from scholarships and other study grants.

Figure 2: Number of Students Awarded the National Toppers Scheme



(Source: TSLB 2018)

B. Ministry of Health & Medical Services – Data Sets:

Table 1: Fiji's Health Services Status 2016

<u>MCH indicator</u>	<u>Rates</u>
Total Live Birth	19,180
Crude Birth Rate	21.1/1000 Population
Crude Death Rate	8.3/1000 Population
Rate of Natural Increase	1.4/1000 Population
Infant Mortality Rate (<1yr)	13.9/1000 live births
Perinatal Mortality Rate (>28 days - < 7 days)	13.2/ 1000 live births
Neo natal Mortality Rate (<28 days)	6.5/1000 live births
Post Neonatal Mortality (728 <364days)	7.4 / 1000 live births
Under 5 Mortality Rate	17.9/1000 Live Births
Maternal Mortality Rate (1 AP-42 Days PP)	20.9/100,000 Live Births
General Fertility Rate	2.5 per Women

Family Planning Protection Rate	48.3%
---------------------------------	-------

(Source: Health Status Report, MOHMS)

Table 2: Adolescent Data 2016

Cases	<u>2014</u>	<u>2015</u>	<u>2016</u>
Teenage Suicide Rate (Rate per 100,000 Population)	8	2	6
Teenage Pregnancy (Rate per 1000 CBA Population)	5.0	25.0	7.0

(Source: Health Status Report 2016, MOHMS)

Table 3: School Health Report (2014- 2016)

Cases	2014	2015	2016
School RHD Screening (Rate per 100 School Children Screened)	20.0	27.0	35.0
HPV Coverage Rate	HPV 1 – 100.0 HPV 2 – 99.0 HPV 3 – 70.0	HPV 1 – 99.0 HPV 2 – 70.0 HPV 3 – 40.0	HPV 1 – 110.0 HPV 2 – 58.0 HPV 3 – NIL

(Source: Health Status Report 2016, MOHMS)

C. Office Of The Director of Public Prosecution – Data Set:

(Office of the Director Public Prosecutions - MEDIA UPDATE)

The following data is authorised for release by the Office of the Director of Public Prosecutions (ODPP) and relates to the number of **formal indictments (*Information*) filed in the High Courts** of Fiji by the Director of Public Prosecutions. This media update consolidates data released by the ODPP from 1 January to 31 December 2017.

This data is confined to incidents of serious sexual offences only.

There were a total of 227 people charged with a total of 444 separate counts of serious sexual offences as of 31 December 2017. There were 24 people charged that were under the age of 18 years. The youngest accused person charged with rape was a 12 year old boy.

The offences were rape (300), attempted rape (7), assault with intent to rape (10), abduction with intent to rape (6), indecent assault (17), defilement (23) and sexual assault (81).

There were 200 victims of the 444 separate sexual offences. Of the 200, there were 130 victims under the age of 18 years.

All accused persons charged with sexual offences were male however victims of the sexual offences were both male and female comprising 184 female victims and 16 male victims.

Table 1: ODPP Rape and Sexual Offences Statistics –1 January to 31 December 2017


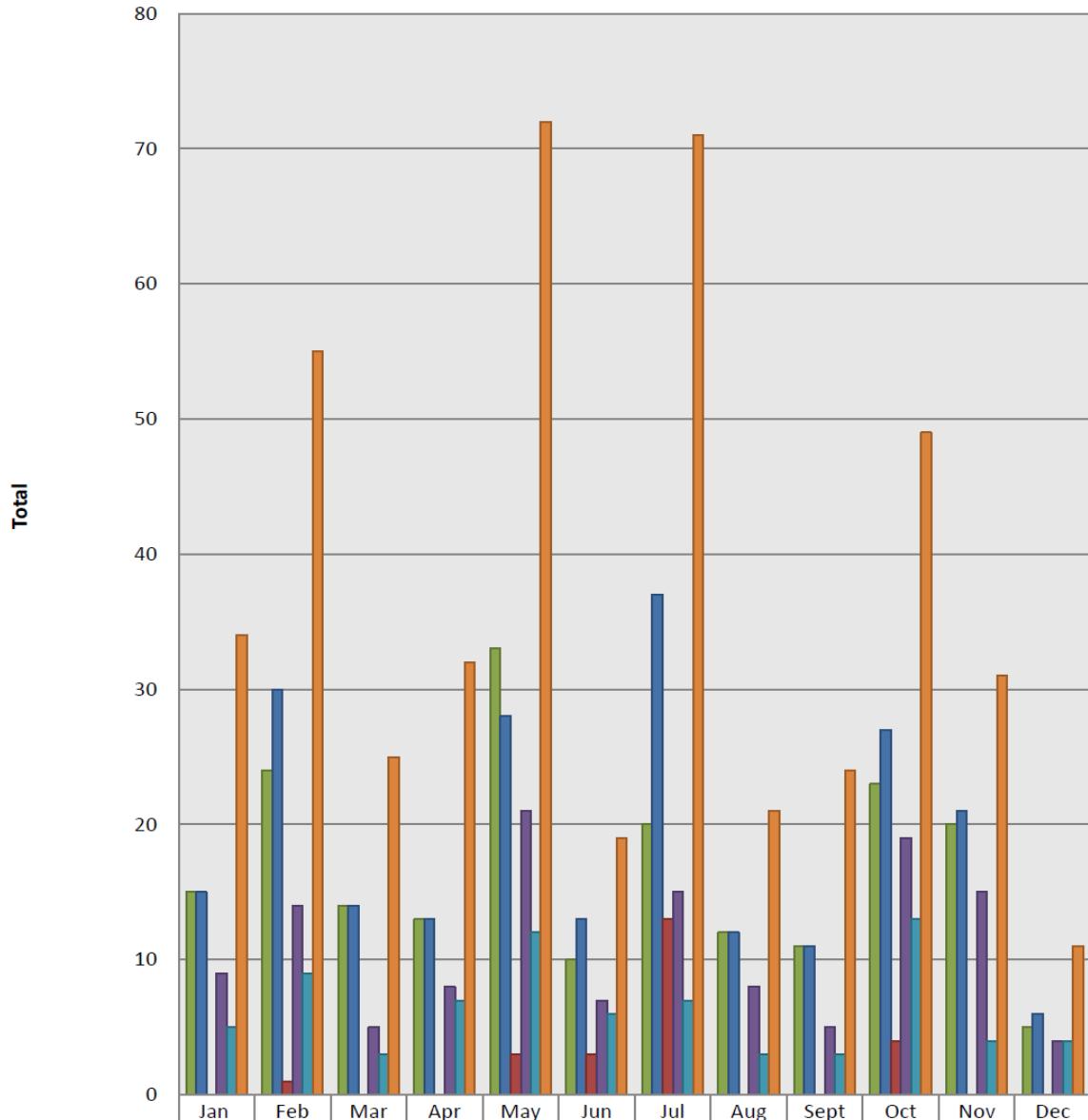
	ODPP Rape and Sexual Offences Statistics 1 January-31 December 2017							
	Rape	Attempted Rape	Assault with intent to Rape	Abduction with an intent to Rape	Indecent Assault	Defilement	Sexual Assault	Total
January	28	1	0	1	0	0	4	34
February	42	0	3	0	1	0	3	55
March	20	0	0	0	0	0	5	25
April	24	0	0	0	3	1	4	32
May	51	1	0	0	3	2	15	72
June	12	1	0	0	0	0	6	19
July	42	4	2	0	0	15	8	71
August	9	0	1	2	0	4	5	21
September	14	0	1	0	1	0	8	24
October	33	0	0	0	0	0	16	49
November	15	0	0	3	6	1	6	31
December	7	0	0	0	3	0	1	11
Total	300	7	10	6	17	23	81	444
	Source: ODPP Fiji							

Figure 1: Total Offences, Number of Accused & Victims –1 January to 31 December 2017



**ODPP Rape and Sexual Offences Statistics
(Total Offences, Number of Accused and Victims)
1 January - 31 December 2017**



	Jan	Feb	Mar	Apr	May	Jun	Jul	Aug	Sept	Oct	Nov	Dec
Total Victims	15	24	14	13	33	10	20	12	11	23	20	5
Total Accused	15	30	14	13	28	13	37	12	11	27	21	6
Accused U18	0	1	0	0	3	3	13	0	0	4	0	0
Victims U18	9	14	5	8	21	7	15	8	5	19	15	4
Domestic Relationships	5	9	3	7	12	6	7	3	3	13	4	4
Total Offences	34	55	25	32	72	19	71	21	24	49	31	11

Source: ODPP FIJI

Figure 2: Total Victims based on Gender –1 January to 31 December 2017

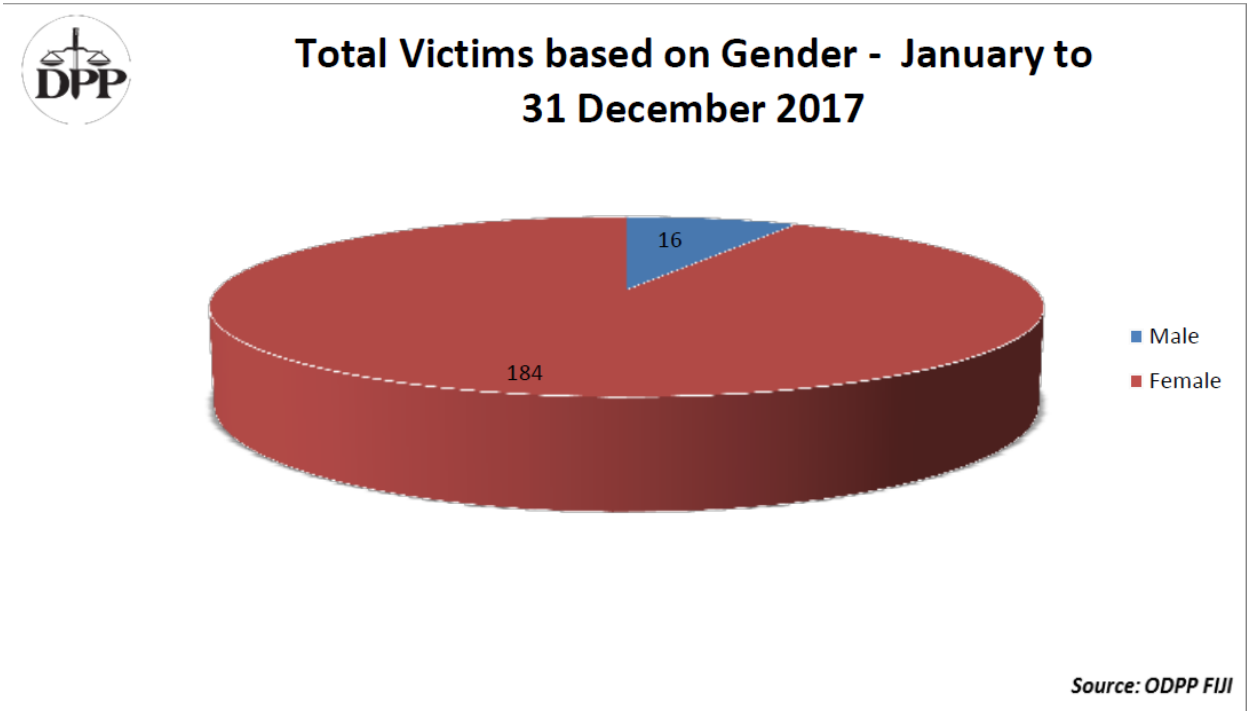
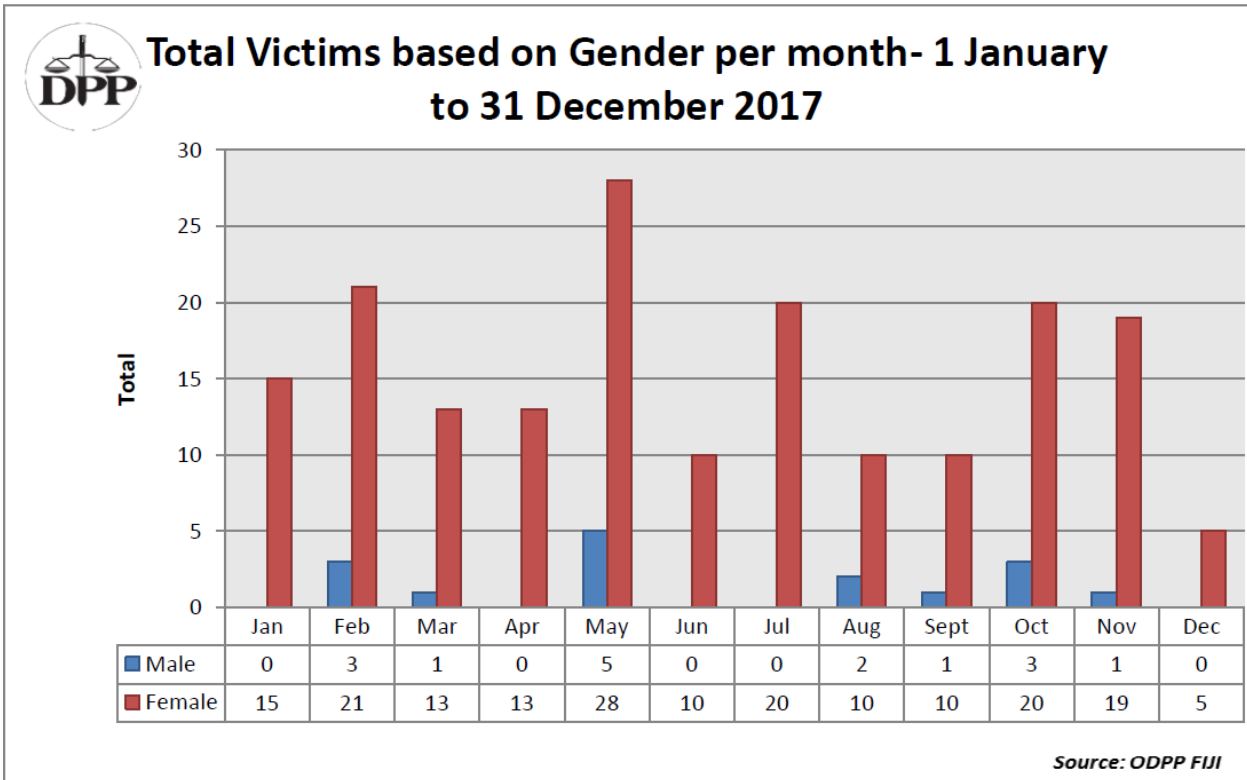


Figure 3: Total Victims based on Gender per month –1 January to 31 December 2017



D. Fiji Islands Bureau of Statistics – Population Aged 15 & Above With Bank Accounts

A total of 392,148 persons aged 15 and above were reported to have a Bank Account. The number equates to a rate of 62.7% with Males at 68.5% while Females had a rate of 56.8%.

The Urban rate was 71.1% and Females at 65.5%. On the other hand, the rural rate was 51.3% with males at 57.8% and Females at 44.3%. Further details are presented in Table 1 below:

Table 1: Population Aged 15 & Above with a Bank Account by Division, Urban and Rural, 2017

	Total			Urban			Rural		
	Total	Male	Female	Total	Male	Female	Total	Male	Female
Total	625,099	315,442	309,657	360,128	177,407	182,721	264,971	138,035	126,936
Central	268,772	133,686	135,086	197,082	96,555	100,527	71,690	37,131	34,559
Eastern	24,237	13,112	11,125	2,883	1,428	1,455	21,354	11,684	9,670
Western	242,146	122,501	119,645	132,477	65,763	66,714	109,669	56,738	52,931
Northern	89,944	46,143	43,801	27,686	13,661	14,025	62,258	32,482	29,776
With Bank Account									
Total	392,148	216,207	175,941	256,094	136,444	119,650	136,054	79,763	56,291
Central	173,733	93,225	80,508	138,920	73,317	65,603	34,813	19,908	14,905
Eastern	7,914	4,697	3,217	1,508	812	696	6,406	3,885	2,521
Western	161,155	89,769	71,386	96,980	52,147	44,833	64,175	37,622	26,553
Northern	49,346	28,516	20,830	18,686	10,168	8,518	30,660	18,348	12,312
% With Bank Account									
Total	62.7%	68.5%	56.8%	71.1%	76.9%	65.5%	51.3%	57.8%	44.3%
Central	64.6%	69.7%	59.6%	70.5%	75.9%	65.3%	48.6%	53.6%	43.1%
Eastern	32.7%	35.8%	28.9%	52.3%	56.9%	47.8%	30.0%	33.3%	26.1%
Western	66.6%	73.3%	59.7%	73.2%	79.3%	67.2%	58.5%	66.3%	50.2%
Northern	54.9%	61.8%	47.6%	67.5%	74.4%	60.7%	49.2%	56.5%	41.3%

(Source: FIBOS 2017)

E.

Reference

- 1) Fiji Bureau of Statistics. 2018. "Population Aged 15 and Above With Bank Account by Division, Urban & Rural 2017. FBOS Release No. 1. . Retrieved February 23, 2018 (<http://www.statsfiji.gov.fj/statistics/2007-census-of-population-and-housing>)
- 2) Office of the Director Public Prosecution. 2018. "ODPP Rape & Sexual Offences Statistics – 1 January to 31 December, 2017." ODPP January 2018 Update. Retrived February 23, 2018. (<http://odpp.com.fj/wp-content/uploads/2018/02/ODPP-Rape-and-Sexual-Offences-Statistics-January-December-2017.pdf>)
- 3) Ministry of Education. 2018 – Unpublished manuscripts
- 4) Ministry of Health & Medical Services. 2016. *Health Status Report 2016*. MOH&MS, Suva, Fiji. Retrieved February 23, 2018 (<http://www.health.gov.fj/PDFs/HSS%20Report/Health%20Status%20Report%202016.pdf>)