

Chapter 4

Labour Force and Employment



4.1 Employment Situation of Young People

Table 4.1a: Economic Activities of Population Aged 14-29⁽¹⁾ (2003-2008)

Statistical Index	2003	2004	2005	2006	2007	2008
Total ('000)						
Labour Force (Aged 14-29)	50.4	53.0	59.1	67.5	79.4	86.3
Employed Population (Aged 14-29)	46.2	49.0	55.6	63.8	75.9	82.6
Of Which: Underemployed Population	0.7	0.5	0.4	0.2	0.2	0.2
Unemployed Population (Aged 14-29)	4.2	3.9	3.5	3.7	3.4	3.7
%						
Labour Force Participation Rate (Aged 14-29)	46.6	47.0	49.2	52.1	57.6	60.3
Unemployment Rate (Aged 14-29)	8.3	7.4	6.0	5.4	4.3	4.2
Underemployment Rate (Aged 14-29)	1.4	0.9	0.6	0.2	0.3	0.2

Source: Statistics and Census Bureau.

Note: (1) The survey has been conducted by random sampling. Subjects included all people living within housing units on Macao Peninsula, Taipa and Coloane, but excluding marine population and persons living in collective living quarters (such as military barracks, hospitals, prisons, student dormitories and elderly homes).

(2) According to Macao's labour laws, under certain circumstances, the legal working age is 14 or above. The above table therefore provides figures for the labour force aged 14-29.

Figure 4.1a: Economic Activities of Population Aged 14-29 (2003-2008)

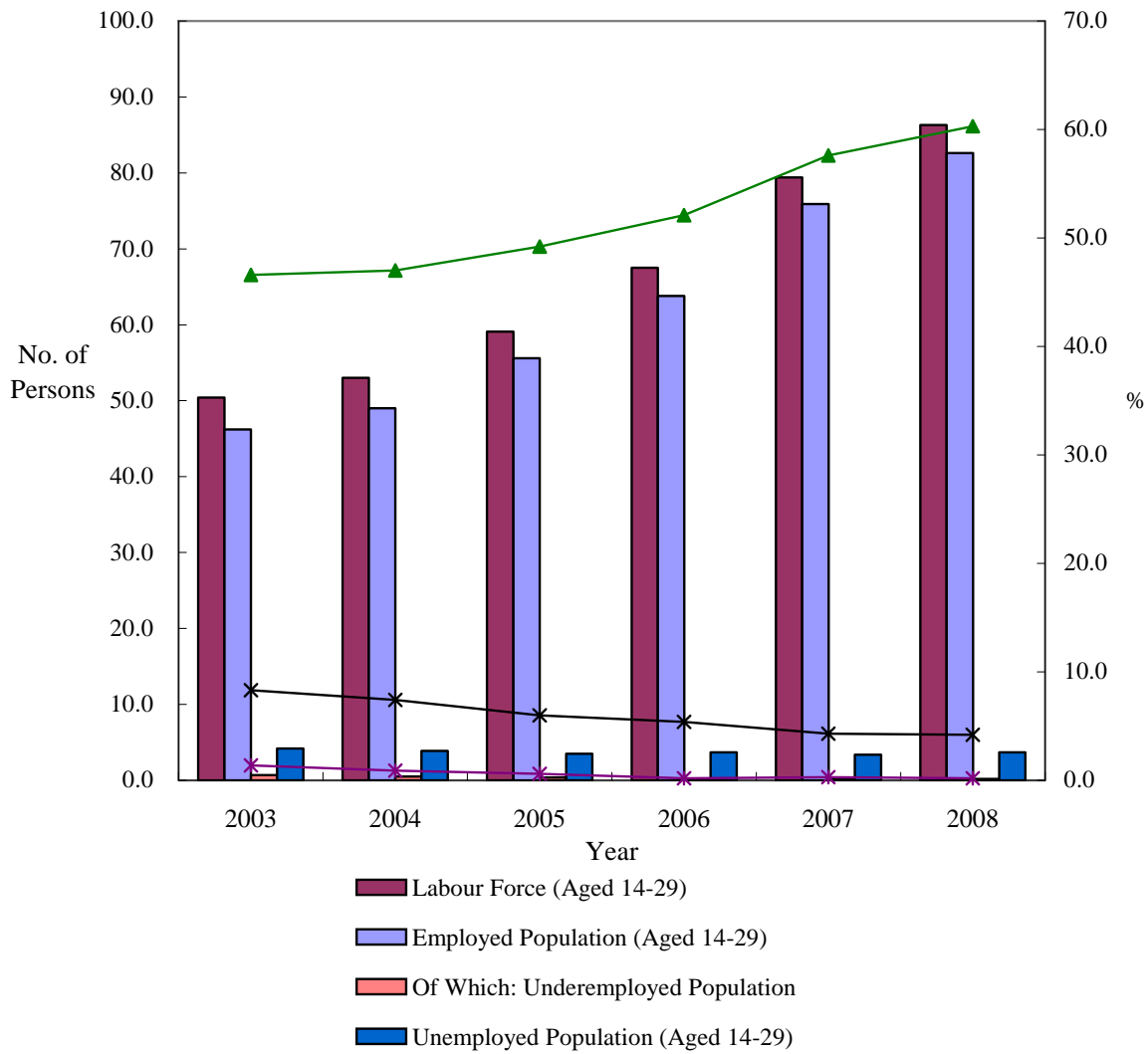
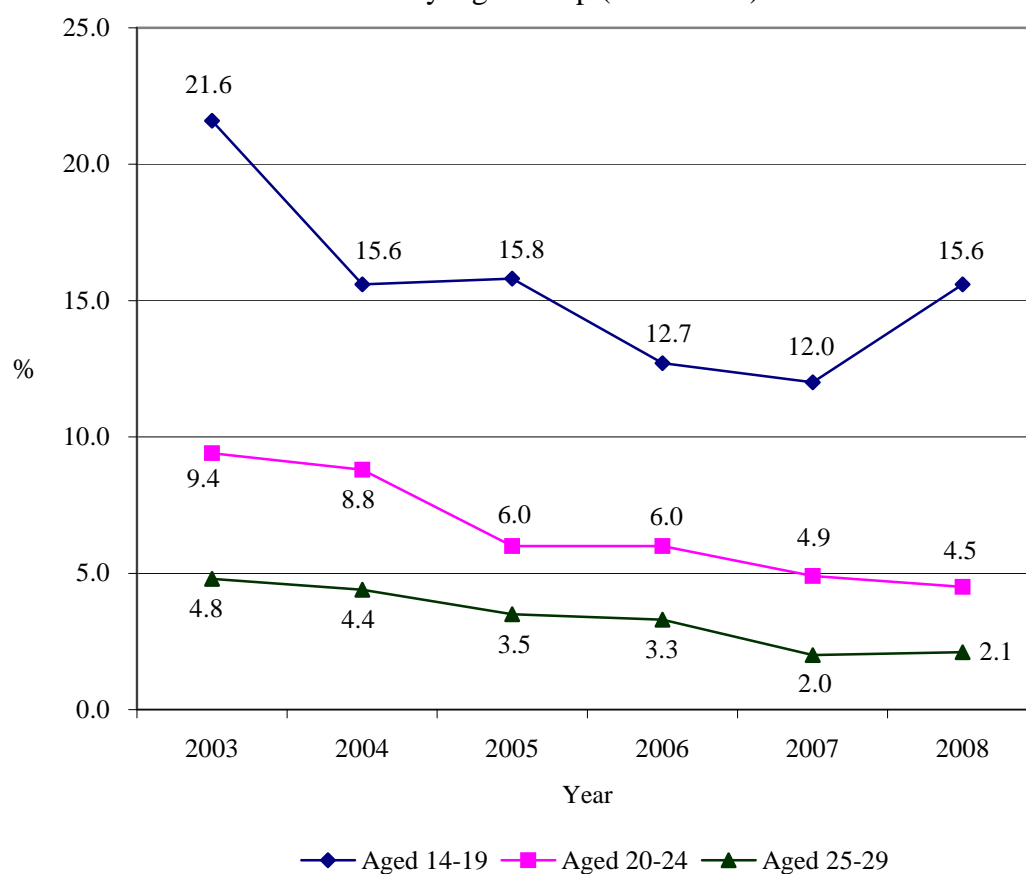


Table 4.1b: Unemployment Rate in Labour Force Aged 14-29 by Age Group (2003-2008)

Age Group	2003	2004	2005	2006	2007	2008
14-19	21.6	15.6	15.8	12.7	12.0	15.6
20-24	9.4	8.8	6.0	6.0	4.9	4.5
25-29	4.8	4.4	3.5	3.3	2.0	2.1

Source: Statistics and Census Bureau.

Figure 4.1b: Unemployment Rate in Labour Force Aged 14-29 by Age Group (2003-2008)



4.2 Weekly Working Hours

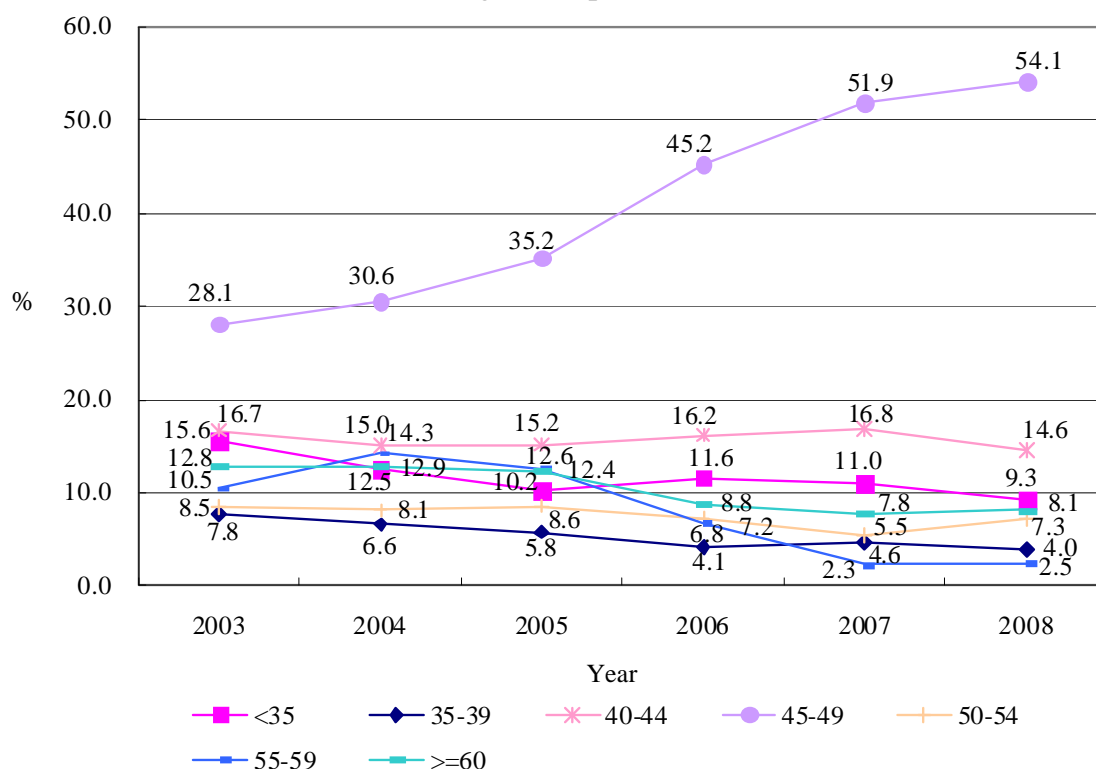
Table 4.2: Distribution of Employed Population Aged 14-29 by Actual Working Hours per Week (2003-2008)

Actual Working Hours per Week	2003	2004	2005	2006	2007	2008
<35	15.6	12.5	10.2	11.6	11.0	9.3
35-39	7.8	6.6	5.8	4.1	4.6	4.0
40-44	16.7	15.0	15.2	16.2	16.8	14.6
45-49	28.1	30.6	35.2	45.2	51.9	54.1
50-54	8.5	8.1	8.6	7.2	5.5	7.3
55-59	10.5	12.9	12.4	6.8	2.3	2.5
>=60	12.8	12.9	12.4	8.8	7.8	8.1
Total	100.0	100.0	100.0	100.0	100.0	100.0

Source: Statistics and Census Bureau.

Note: (1) Due to rounding, slight discrepancy may occur in the sum of individual items and the total.

Figure 4.2: Distribution of Employed Population Aged 14-29 by Actual Working Hours per Week (2003-2008)



4.3 Average Income of Young People

Table 4.3: Median Monthly Employment Earnings of Employed Population Aged 14-29 by Age Group ⁽¹⁾ (2003-2008)

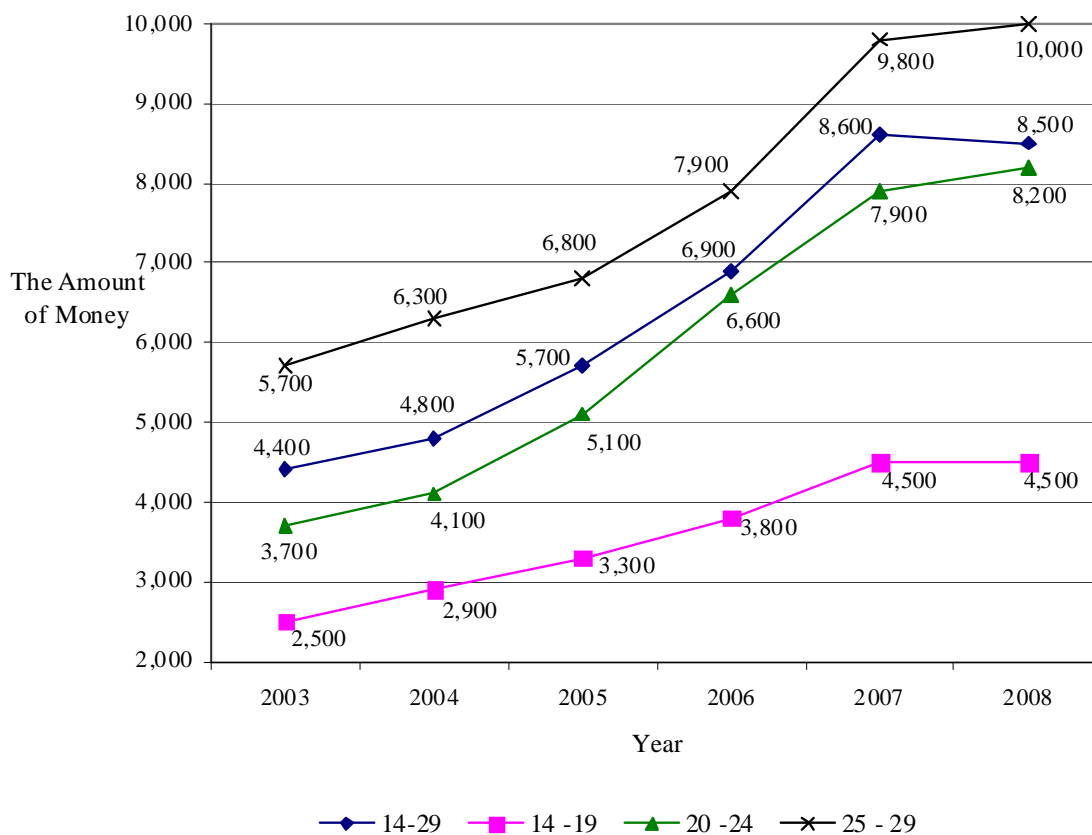
	MOP					
Age Group	2003	2004	2005	2006	2007	2008
Overall (Total Population Aged 14-29)	4,400	4,800	5,700	6,900	8,600	8,500
14-19	2,500	2,900	3,300	3,800	4,500	4,500
20-24	3,700	4,100	5,100	6,600	7,900	8,200
25-29	5,700	6,300	6,800	7,900	9,800	10,000

Source: Statistics and Census Bureau.

Note : (1) Employment earnings: For the employees, it refers to the remuneration received. For the non-employees, it is the receipt of gross production value minus production expenditure and depreciation of assets.

(2) Remuneration: Amount of money (without any deduction in amount) paid to employees regularly, in cash or in kind, according to their actual working hours or the services they provide during the reference period, including annual leaves and other paid leaves.

Figure 4.3: Median Monthly Employment Earnings of Employed Population Aged 14-29 by Age Group (2003-2008)



4.4 Distribution of Youth Population by Occupation

Table 4.4a: Distribution of Employed Population Aged 14-29 by Occupation and Status in Employment (2003-2008)

	%					
Occupation	2003	2004	2005	2006	2007	2008
Professionals	4.5	4.3	3.3	4.4	3.6	3.2
Technicians and Associate Professionals	12.9	13.1	11.4	10.5	11.4	9.1
Clerks	30.4	34.1	37.4	42.5	47.4	42.1
<i>Of which, workers directly related to betting services (like casino dealers, floor-persons, chip cashiers, etc.)</i>	--	--	--	--	25.1	22.6
Workers in Services and Sales and Similar Fields	23.1	23.1	23.3	22.3	22.3	25.1
Industrial Workers and Craftsmen	5.4	4.7	4.7	4.4	4.4	4.5
Plant and Machine Operators, Drivers and Assemblers	12.9	11.4	10.7	7.6	3.1	3.4
Non-technical Workers	8.5	7.3	7.5	6.6	6.7	10.9
Others	2.3	2.0	1.7	1.7	1.1	1.7
Total	100.0	100.0	100.0	100.0	100.0	100.0

Source: Statistics and Census Bureau.

Figure 4.4a: Distribution of Employed Population Aged 14-29 by Occupation and Status in Employment (2003-2008)

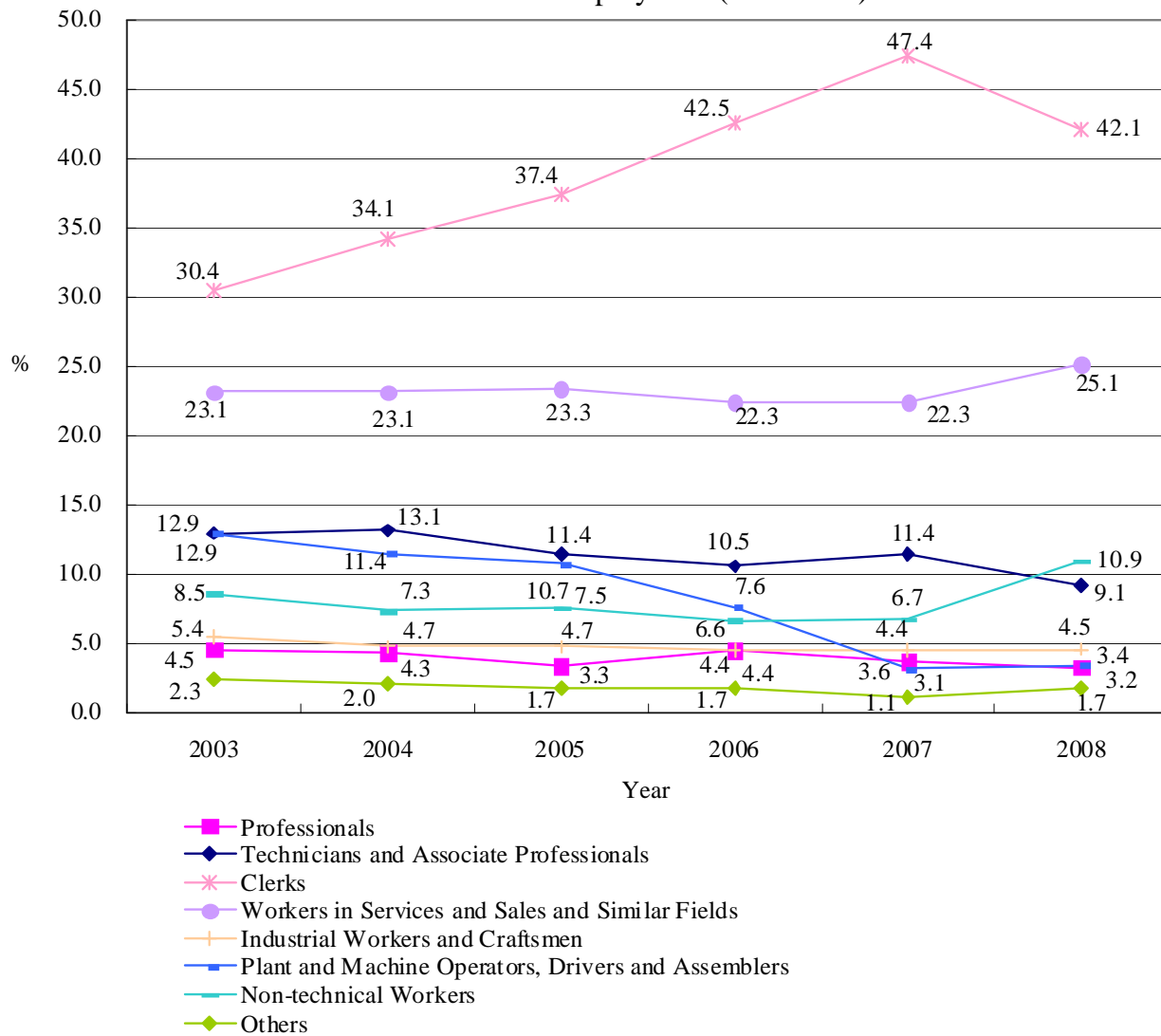


Table 4.4b: Distribution of Employed Population Aged 14-29 by Occupation and Status in Employment ⁽¹⁾ (2003-2008)

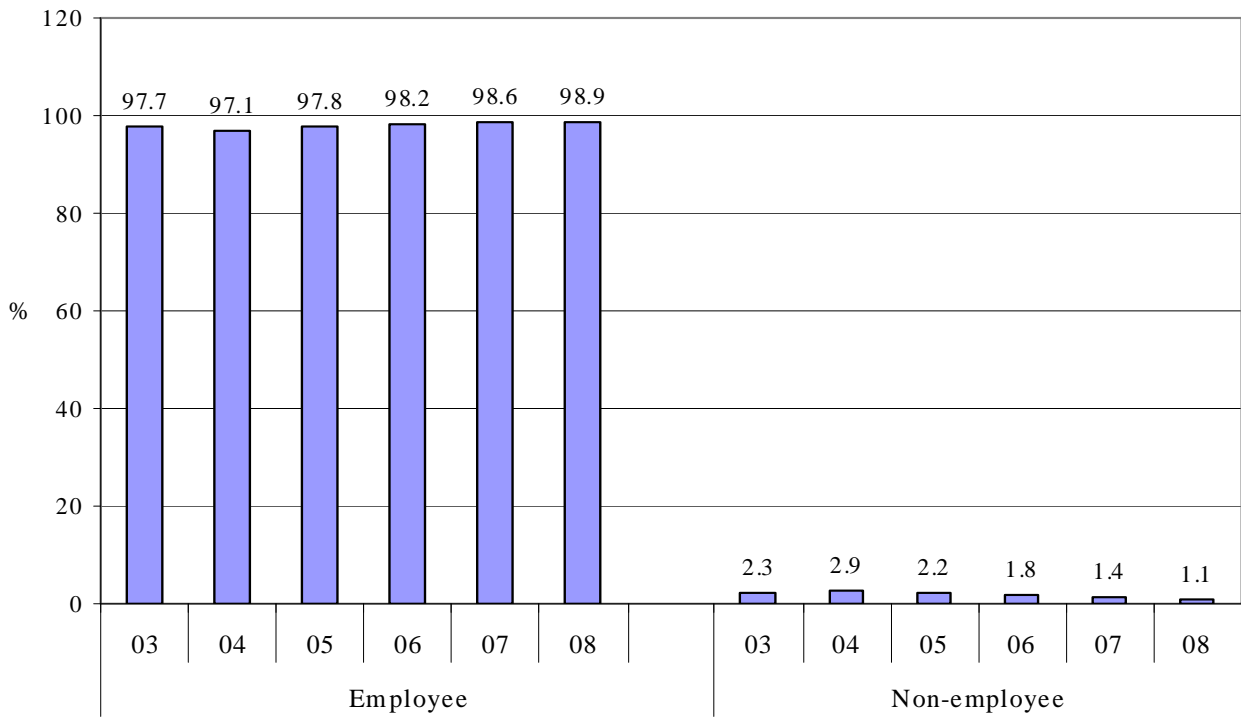
Occupation	Status in Employment Employee						Status in Employment Non-employee						%
	03	04	05	06	07	08	03	04	05	06	07	08	
	Professionals	4.4	4.2	3.3	4.2	3.6	3.2	0 [#]	0.1	0 [#]	0.2	0.1	
Technicians and Associate Professionals	12.7	12.6	11.1	10.3	11.0	8.9	0.2	0.6	0.3	0.2	0.4	0.2	
Clerks	30.1	33.8	37.2	42.4	47.3	41.9	0.2	0.3	0.2	0.2	0.1	0.2	
<i>Of which, workers directly related to betting services (like casino dealers, floor-persons, chip cashiers, etc.)</i>	--	--	--	--	25.0	22.5	--	--	--	--	0 [#]	0.1	
Workers in Services and Sales and Similar Fields	22.1	22.5	22.7	21.7	21.8	24.7	1.0	0.5	0.6	0.6	0.5	0.4	
Industrial Workers and Craftsmen	5.3	4.4	4.6	4.2	4.4	4.5	0.1	0.2	0.1	0.1	0 [#]	0.1	
Plant and Machine Operators, Drivers and Assemblers	12.8	11.2	10.7	7.5	3.0	3.4	0.1	0.2	0 [#]	0 [#]	0.1	0 [#]	
Non-technical Workers	8.4	7.3	7.5	6.5	6.7	10.9	0.1	0 [#]	0 [#]	0 [#]	0 [#]	0 [#]	
Others	1.8	1.1	0.8	1.4	0.8	1.4	0.6	1.0	1.0	0.5	0.2	0.2	
Total	97.7	97.1	97.8	98.2	98.6	98.9	2.3	2.9	2.2	1.8	1.4	1.1	

Source: Statistics and Census Bureau.

Note : (1) "Non-employee" includes employer, own-account worker and unpaid family worker.

(2) 0[#] represents the result is less than half of the unit employed.

Figure 4.4b: Distribution of Employed Population Aged 14-29 by Occupation and Status in Employment (2003-2008)



4.5 Educational Attainment and Income

Table 4.5: Median Monthly Employment Earnings of Employed Population Aged 14-29 by Educational Attainment ⁽¹⁾ (2003-2008)

	MOP					
Educational Attainment	2003	2004	2005	2006	2007	2008
Overall (Total Population Aged 14-29)	4,400	4,800	5,700	6,900	8,600	8,500
Never Attended School/ Pre-school Education	3,300	3,400	3,700	4,400	6,200	6,000
Primary Education	3,500	3,800	4,300	5,100	6,300	7,700
Junior Secondary Education	3,300	3,800	4,000	5,100	7,800	7,000
Senior Secondary Education	4,300	4,600	6,000	7,000	7,600	7,500
Higher Education	7,700	7,700	8,600	9,100	9,800	10,800

Source: Statistics and Census Bureau.

Note: (1) Employed population: Total number of individuals aged 14 and above who worked for at least 1 hour during the reference period, for remuneration, profits or family gains, in cash or in kind. This includes those who are employed and yet do not go to work, but have formal job attachments to the employer; or those who own a company, but for special reasons do not work for the time being.

Figure 4.5: Median Monthly Employment Earnings of Employed Population Aged 14-29 by Educational Attainment (2003-2008)

