

## MATERNAL AND CHILD HEALTH\*

*" The protection of the health of mothers and children is now considered as one of the most, if not the most, important functions of a health service in any country."*

*The MCH/family planning programme clearly plays a decisive role in attaining the health-for-all goal in the Region."*

*WHO, Reproductive health focus*

Maternal and child health indicators are recognized as health gauges and determinants of social welfare in the whole world. Two out of eight goals of the United Nations Millennium Development Goals serve the purpose of protecting maternal and child health.

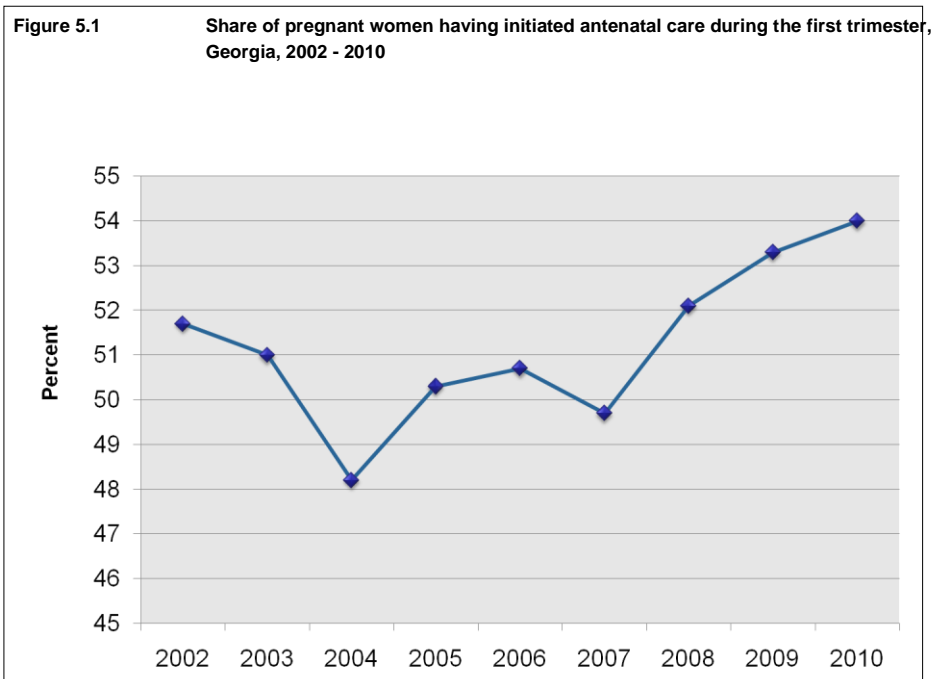
Child health, considering the characteristics of child development, is an essential part of the health of entire population and it is measured using the same methods and indicators that are applied to the evaluation of public health status. Infant health is significantly dependent on maternal health and availability of qualitative medical services for mothers and infants.

According to the data from women consultancy centers, 80 838 pregnant women were registered in Georgia in 2010. During the reporting year, 54% of these women were enrolled before the 12<sup>th</sup> week of pregnancy (53.3% in 2009). During the year, 56 200 pregnant women were taken from the enrollment lists, out of which, 91.7% carried the pregnancies to the end, in 1.5% of cases spontaneous abortions were registered (gestation age less than 22 weeks); 89% of women had term deliveries.

In 2010, 83% (78.5% - in 2009) of enrolled pregnant women had at least 4 full antenatal care visits. During these visits 92% of the expectant mothers were examined by therapists; in women enrolled during the first trimester this percent was higher - 94.5%. 96.5 % of the pregnant women were tested for Rh-factor, 94.6% - for syphilis and 88.4% - for HIV-infection. Additionally, 10.5% was referred to being tested for Hepatitis C (See Figure 5.1).

---

\* Data of the National Center for Disease Control and Public Health.



Since June 2007, a screening program for pregnant women to identify carriers of hepatitis B surface antigen (HBsAg), and passive immunization against hepatitis B for newborns with high risk of infection (born to antigen-positive mothers) have been available. These activities are supported by the Rostropovich-Vishnevskaya Foundation (RVF). The immunization has been carried out with anti-hepatitis B virus immunoglobulin (HBIG).

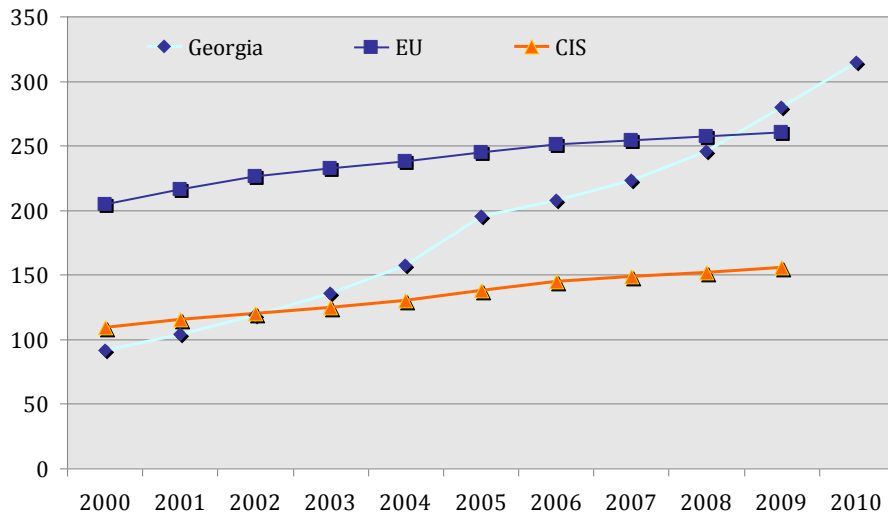
In 2010, 48 804 (87.4%) pregnant women were screened using HBs immune-ferment test-systems; 2.8% of cases were detected as antigen-positive after laboratory confirmation. 1 366 infants born to antigen-positive mothers were vaccinated with anti-hepatitis B virus immunoglobulin (coverage rate -100%).

According to the data from women consultancy centers, 7% of pregnant women were diagnosed with anemia in the first trimester; 4% - with genitourinary system diseases and 3% - with thyroid gland pathologies. During the reporting year, 2 900 (3.6%) women were hospitalized due to pregnancy related pathologies.

In 2010, 61 928 deliveries were registered by health facilities, including 99.6% of deliveries at maternity homes and departments; 63.4 percent of deliveries were physiological and 36.6 percent - pathological.

During the last decade, the increase of the number of caesarean sections was observed in the majority of developed countries. According to the WHO recommendations the "ideal rate" of caesarean sections is 15%. In 2010, 19 442 caesarean sections were performed in Georgia. It accounts for 31% of the total number of deliveries (See Figure 5.2).

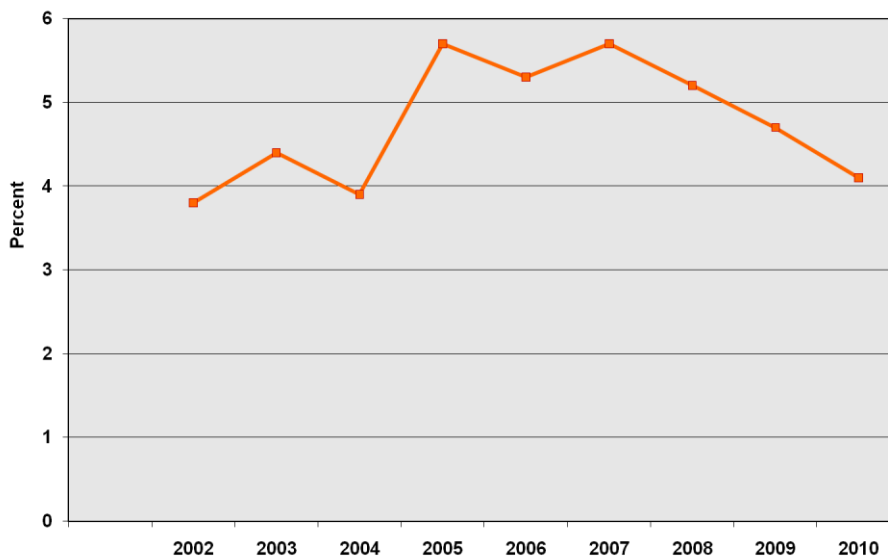
Figure 5.2 Number of caesarean sections per 1 000 lives births, Georgia, the EU, the CIA



Source: WHO HFADB

Besides the caesarean section ratio two more indicators should be used to evaluate the quality of the obstetric care: the trends of intra partum and post partum infections (including post caesarean section peritonitis) and obstetric traumas. The incidence rate of intra partum and post partum infections is relatively low in Georgia and has been stable during last years, and reaches up to 0.1%. Last years the share of deliveries with obstetric traumas has shown a downward trend and bottomed at 4.1% in 2010 (See Figure 5.3).

Figure 5.3 Share of deliveries complicated by obstetric traumas, Georgia, 2002 - 2010

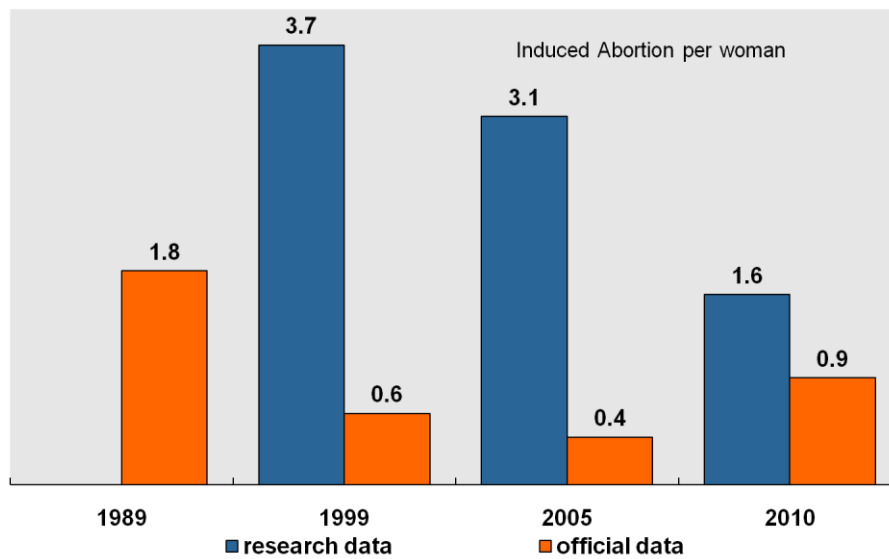


According to the data from maternity homes the cases of ***intrapartum and postpartum complications included:*** anemia (5.4%), complications due to malpresentation and

malposition of fetus (3%), pre-eclampsia and eclampsia (2.7%), and abnormalities of forces of labor (2.6%).

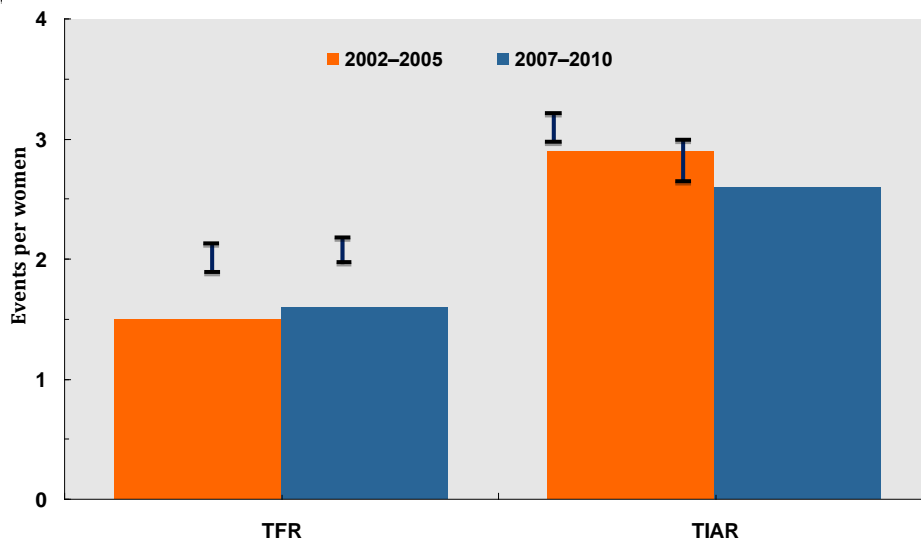
In the reporting year, 25 585 **abortions** were registered. In 2007-2010, according to the official data, the TIAR (total induced abortions rate) equals 0.9 per woman. This is 44% lower than the indicator shown by the 2010 Georgian Reproductive Health Survey (GeoRHS2010). Although, there is a significant improvement in comparison with the data for 1999 and 2005, when the studies identified 80% gap (See Figure 5.4).

Figure 5.4 Trends in the Period Total Induced Abortion Rate; Survey Estimates and Governmental Sources, Georgia 1999, 2005, 2010



According to the data of the GeoRHS2010, the decrease of the total induced abortion rate (TIAR) is accompanied by the rise of the total fertility rate – TFR (See Figure 5.5).

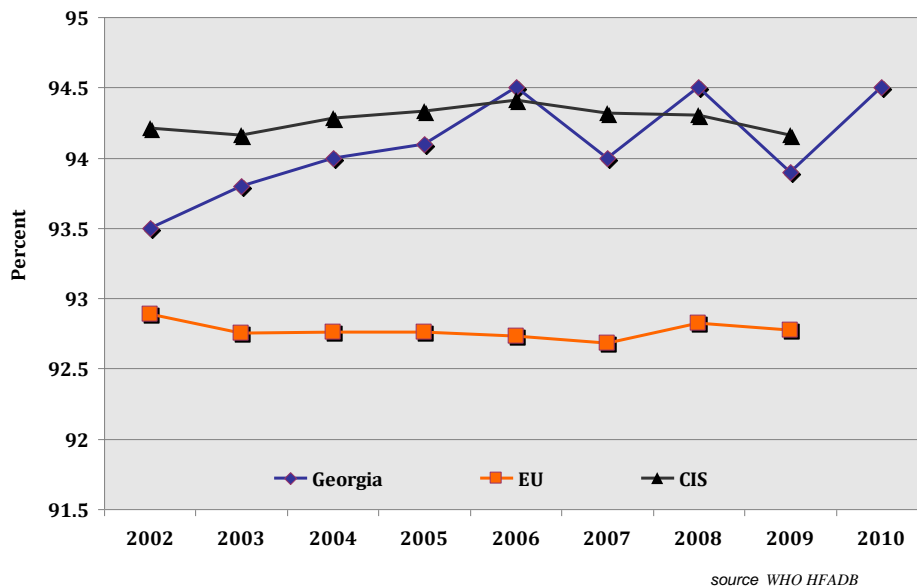
Figure 5.5 Changes in Fertility and Abortion Rate between 2002 and 2010, GeoRHS2010;



In 2010, 12 cases of maternal deaths were reported; maternal mortality rate - 19.4. Additionally during the reporting period there were registered 2 cases of late maternal deaths.

In 2010, in Georgia, there were registered 61 901 live births; 99.6% of which were delivered at in-patient facilities. 94.5% of live-born infants had a birth weight more than 2499 grams. This indicator has been stable for years (See Figure 5.6).

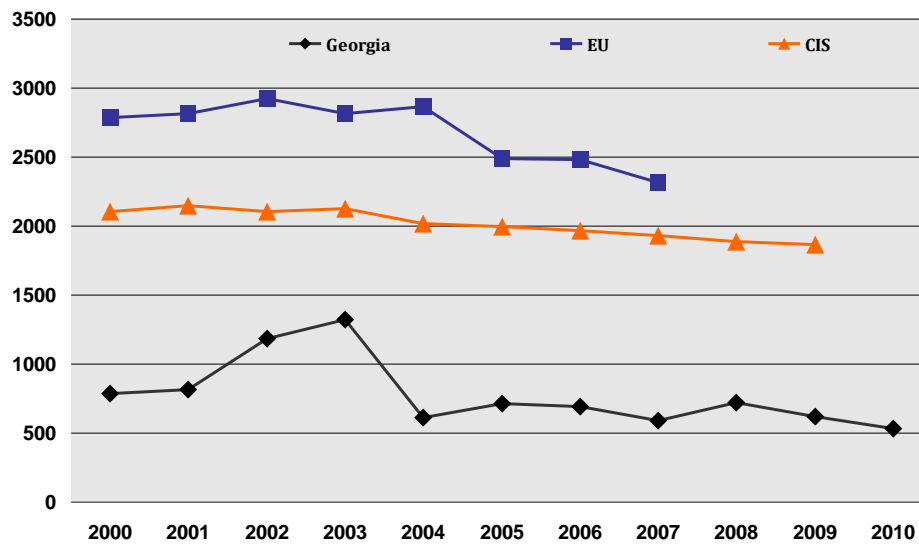
Figure 5.6 Percent of livebirths with a normal birth weight, Georgia, the EU, the CIS



Breastfeeding was initiated during the first hour after delivery for 69% of live-borns; 37.4% of infants were breastfed at the age of 3 months.

According to the data of maternity homes, 8.8% of infants were born sick or got sick after the birth. 92.4% of the cases were caused by certain conditions originating in the perinatal period and 6% of cases - by congenital abnormalities. Incidence of congenital abnormalities in live-borns is characterized with a downward trend and is almost four times lower than the corresponding indicator for the European Union (See Figure 5.7).

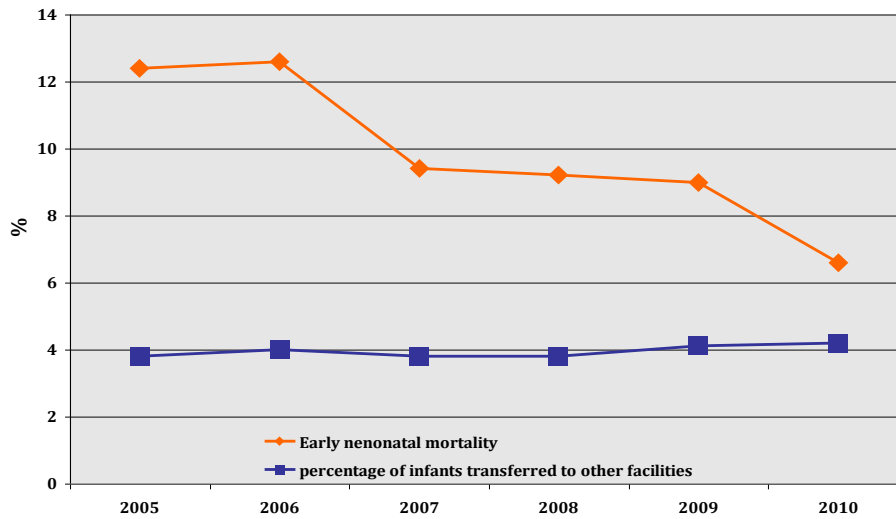
Figure 5.7 Congenital malformations incidence rate per 100 000 livebirths, Georgia, the EU, the CIS



source: WHO HFADB

4.2% of infants were transferred from maternity homes to the departments for premature newborns. During last years the growth of the rate mentioned afore was accompanied by the decrease of the early neonatal mortality rate (Figure 5.8).

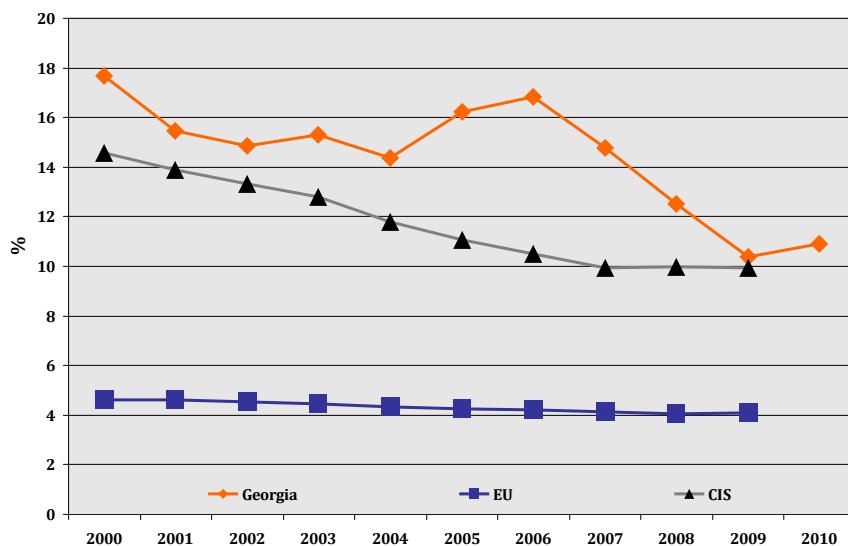
Figure 5.8 Early neonatal mortality rate and percent of newborns transferred from maternity homes to other hospitals, Georgia, 2005 - 2010



In 2010, there were registered 410 the early neonatal deaths (early neonatal mortality rate – 6.6), including 118 deaths at maternity homes.

During the reporting year, 682 stillbirths were registered, the stillbirth ratio per 1 000 births is 10.9. This is 2.5 times more than the respective European Union ratio and within the range the CIS countries corresponding indicator (See Figure 5.9).

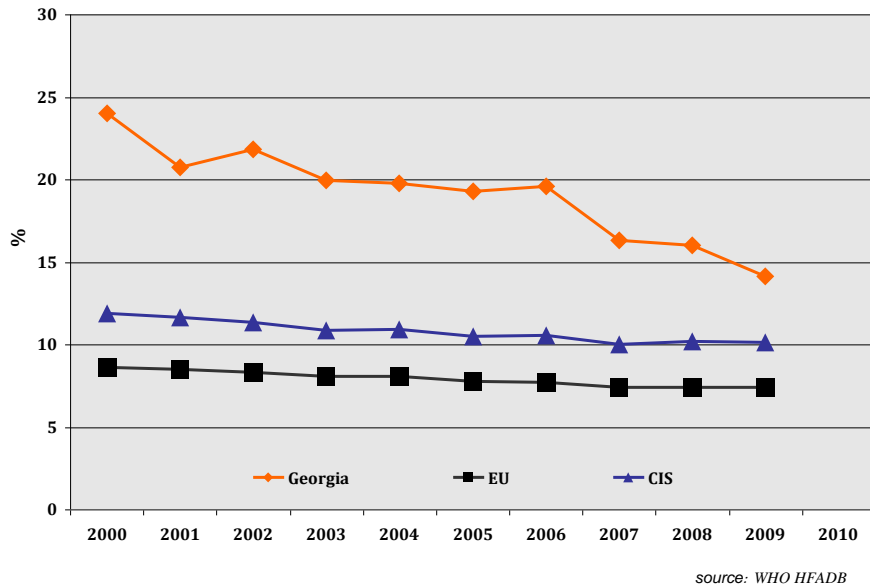
Figure 5.9 Stillbirth ratio, Georgia, the EU, the CIS



source: WHO HFADB

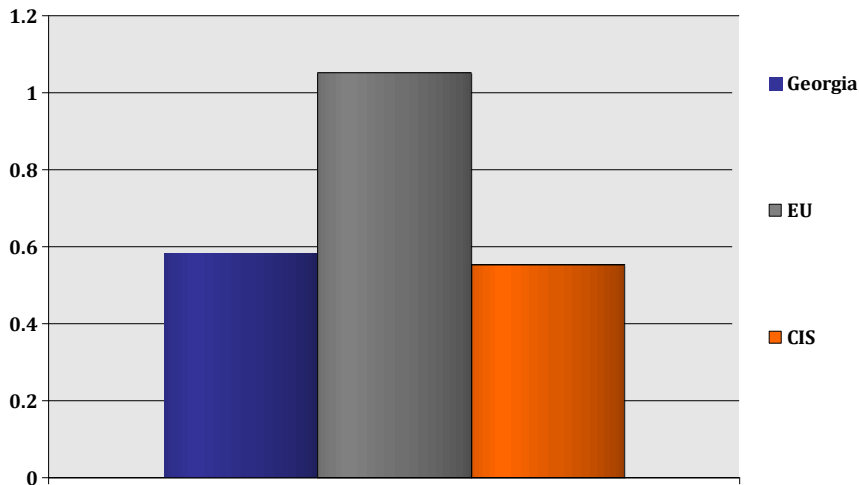
Improvement of the stillbirth ratio, which is a major component of the perinatal mortality, means also a reduction of the perinatal mortality ratio. In Georgia this indicator is characterized with a downward trend (See Figure 5.10).

Figure 5.10 Perinatal mortality ratio, Georgia, the EU, the CIS



A large proportion of infant and under-five deaths occur soon after birth, in the neonatal period. Globally, the lower the child mortality, the higher the proportion of deaths that occur before the age of four weeks, as under-five mortality is easier to reduce. Early neonatal mortality accounts for three out of four neonatal deaths; this figure is only slightly higher in developed regions. Worldwide neonatal mortality represents more than half of overall infant mortality and over one third of under five deaths. (See Figure 5.11).

Figure 5.11 Ratio of reported to estimated under 5 mortality rates, WHO, 2009





## Mortality rate according to the World regions and the level of development

|                             | Neonatal mortality as % of under-five mortality | Neonatal mortality as % of infant mortality | Early neonatal mortality as % of neonatal mortality | Early neonatal mortality as % of perinatal mortality |
|-----------------------------|---|---|---|--|
| World                       | 36  | 53  | 75  | 47   |
| More developed regions      | 52  | 63  | 79  | 37   |
| Less developed regions      | 36  | 53  | 75  | 48   |
| Africa                      | 26  | 42  | 75  | 48   |
| Asia                        | 45  | 61  | 75  | 47   |
| Latin America and Caribbean | 42  | 51  | 77  | 55   |

In 2010, in Georgia, according to the data, provided by medical institutions, 894 children died at the age under 15 years. The majority of the cases (90.4%) were registered at hospitals.

Infant mortality accounts to 88.9% of the cases of the child mortality. Infant mortality rate was 12.0 per 1,000 livebirths. Main causes of the infant mortality belong to the following classes:

- Certain conditions originating in the perinatal period (70.2%);
- Respiratory system diseases (9.7%);
- Congenital anomalies (8.5%).

In 2010, according to the data, collected from out-patient facilities, 463 204 **cases of diseases** in children under the age of 15 were registered (prevalence – 61229.9), including 387 079 new cases (incidence – 51167.1).

The incidence is high in the following classes:

- respiratory system diseases - 32304.7;
- certain infectious and parasitic diseases – 5190.4;
- diseases of the digestive system – 2286.3.

During the reporting year, in children 77 107 cases of **hospital discharges** there were registered. Hospitalization rate was 101.9. Hospitalization rates were high in the following classes:

- respiratory system diseases – 54.0;
- certain infectious and parasitic diseases – 17.1;
- certain conditions originating in the perinatal period – 9.0.

Share of hospitalizations of infants in the total number of all children hospitalizations was 34.5%; hospitalization rate in infants - 428.3. Infant hospitalization rates were high in the following classes of diseases:

- respiratory system diseases – 209.3;
- certain conditions originating in the perinatal period – 109.7;
- certain infectious and parasitic diseases – 63.6.

**Table 5.1 Births, child and maternal mortality rates (data collected from health facilities), Georgia, 2005 – 2010**

|   | 2005  | 2006  | 2007  | 2008  | 2009  | 2010  |
|---|-------|-------|-------|-------|-------|-------|
| Total number of deliveries                                    | 47246 | 48181 | 49626 | 56096 | 61656 | 61928 |
| Hospital deliveries   | 46537 | 47593 | 49317 | 55850 | 61441 | 61653 |
| Home deliveries   | 709   | 588   | 309   | 246   | 215   | 275   |
| Total number of live births                                   | 47022 | 47856 | 49476 | 56025 | 61677 | 61901 |
| Live births at home without further hospitalization           | 688   | 536   | 308   | 235   | 209   | 255   |
| Total number of stillbirths                                   | 766   | 817   | 738   | 717   | 665   | 682   |
| Total number of infant deaths (at the age 0-1 year)*          | 851   | 882   | 699   | 802   | 872   | 741   |
| Total number of early neonatal deaths (at the age 0-6 days)   | 585   | 604   | 467   | 516   | 558   | 410   |
| Total number of late neonatal deaths(at the age 7-28 days)    | 123   | 146   | 118   | 147   | 214   | 186   |
| Total number of post neonatal deaths (at the age 29-365 days) | 143   | 132   | 114   | 139   | 100   | 145   |
| Total number of under-five deaths*                            | 911   | 945   | 945   | 898   | 949   | 830   |
| Total number of maternal deaths                               | 11    | 11    | 10    | 8     | 33    | 12    |
| Stillbirth rate per 1000 births                               | 16.0  | 16.8  | 14.7  | 12.6  | 10.7  | 10.9  |
| Early neonatal mortality rate per 1000 live births            | 12.4  | 12.6  | 9.4   | 9.2   | 9.0   | 6.6   |
| Late neonatal mortality rate per 1000 live births             | 2.6   | 3.1   | 2.4   | 2.6   | 3.5   | 3.0   |
| Perinatal mortality rate per 1000 births                      | 28.3  | 29.2  | 24.0  | 21.7  | 19.7  | 17.4  |
| Infant mortality rate per 1000 live births*                   | 18.1  | 18.4  | 14.1  | 14.3  | 14.1  | 12.0  |
| Under-five mortality rate per 1000 live births*               | 19.4  | 19.7  | 15.7  | 16.0  | 15.4  | 13.4  |
| Maternal mortality rate per 100000 live births                | 23.4  | 23.0  | 20.2  | 14.3  | 52.1  | 19.4  |

**Table 5.2 Births and infant deaths by the regions (data collected from health facilities), Georgia, 2010**

|                                     | Number of live births | Number of stillbirths | Stillbirth ratio per 1000 births | Number of infant deaths | Infant mortality rate per 1000 live births | Number of early neonatal deaths | Early neonatal mortality rate per 1000 live births | Perinatal mortality ratio per 1000 births |
|-------------------------------------|-----------------------|-----------------------|----------------------------------|-------------------------|--|---------------------------------|--|---|
| Ajara                               | 6087                  | 55                    | 9.0                              | 55                      | 9.0  | 29                              | 4.8  | 13.7                                      |
| Tbilisi                             | 26386                 | 396                   | 14.8                             | 407                     | 15.4                                       | 178                             | 6.7  | 21.4                                      |
| Kakheti                             | 3745                  | 24                    | 6.4                              | 28                      | 7.5  | 22                              | 5.9  | 12.2                                      |
| Imereti                             | 9210                  | 100                   | 10.7                             | 170                     | 18.5                                       | 120                             | 13.0   | 23.6                                      |
| Samegrelo and Zemo Svaneti          | 4363                  | 22                    | 5.0                              | 16                      | 3.7  | 10                              | 2.3  | 7.3                                       |
| Shida Kartli                        | 3390                  | 35                    | 10.2                             | 27                      | 8.0  | 24                              | 7.1  | 17.2                                      |
| Kvemo Kartli                        | 4921                  | 27                    | 5.5                              | 20                      | 4.1  | 16                              | 3.3  | 8.7                                       |
| Guria                               | 1089                  | 0                     | 0                                | 2                       | 1.8  | 2                               | 1.8  | 1.8                                       |
| Samtskhe – Javakheti                | 2196                  | 20                    | 9.0                              | 14                      | 6.4  | 9                               | 4.1  | 13.1                                      |
| Mtskheta – Mtianeti                 | 439                   | 3                     | 6.8                              | 1                       | 2.3  | 0                               | 0  | 6.8                                       |
| Racha – Lechkhumi and Kvemo Svaneti | 75                    | 0                     | 0                                | 1                       | 13.3                                       | 0                               | 0  | 0   |
| <b>Georgia</b>                      | <b>61901</b>          | <b>682</b>            | <b>10.9</b>                      | <b>741</b>              | <b>12.0</b>                                | <b>410</b>                      | <b>6.6</b>   | <b>17.4</b>                               |

\* The total number of infant and under-five deaths includes both in-patient and out-patient deaths, registered by health facilities

**Table 5.3 Essential data on antenatal care, Georgia 2010**

|                                     | Number of pregnancies taken from the enrollment lists | Pregnancy brought to the end |             | Pregnant women with 4 antenatal care visits |             |
|-------------------------------------|---|------------------------------|-------------|---|-------------|
|                                     |   | Number                       | %           | Number                                      | %           |
| Ajara                               | 6349  | 5779                         | 91.0        | 5140  | 88.9        |
| Tbilisi                             | 20465   | 18351                        | 89.7        | 14819                                       | 80.8        |
| Kakheti                             | 4082  | 3796                         | 93.0        | 3282  | 86.5        |
| Imereti                             | 8907  | 8264                         | 92.8        | 7109  | 86.0        |
| Samegrelo and Zemo Svaneti          | 3664  | 3326                         | 90.8        | 3047  | 91.6        |
| Shida Kartli                        | 3509  | 3297                         | 94.0        | 3227  | 97.9        |
| Kvemo Kartli                        | 4883  | 4709                         | 96.4        | 2986  | 63.4        |
| Guria                               | 1036  | 998                          | 96.3        | 757   | 75.9        |
| Samtskhe – Javakheti                | 2207  | 1997                         | 90.5        | 1714  | 85.8        |
| Mtskheta – Mtianeti                 | 570   | 512                          | 89.8        | 366   | 71.5        |
| Racha – Lechkhumi and Kvemo Svaneti | 139   | 104                          | 74.8        | 81  | 77.9        |
| <b>Georgia</b>                      | <b>56200</b>  | <b>51511</b>                 | <b>91.7</b> | <b>42820</b>                                | <b>83.1</b> |

**Table 5.4 Essential data on antenatal care, Georgia, 2010**

|                                     | Number of pregnant women who initiated antenatal care during the reporting year | Pregnant women tested for syphilis |             | Pregnant women tested for HIV |             | Pregnant women tested for Hepatitis B |             |
|-------------------------------------|---|------------------------------------|-------------|-------------------------------|-------------|---------------------------------------|-------------|
|                                     |   | Number                             | %           | Number                        | %           | Number                                | %           |
| Ajara                               | 5931  | 5627                               | 94.9        | 5049                          | 85.1        | 5008                                  | 84.4        |
| Tbilisi                             | 20225   | 19256                              | 95.2        | 18367                         | 90.8        | 18207                                 | 90.0        |
| Kakheti                             | 3941  | 3570                               | 90.6        | 3008                          | 76.3        | 3023                                  | 76.7        |
| Imereti                             | 8735  | 8630                               | 98.8        | 8143                          | 93.2        | 7948                                  | 91.0        |
| Samegrelo and Zemo Svaneti          | 3623  | 3580                               | 98.8        | 3463                          | 95.6        | 3556                                  | 98.2        |
| Shida Kartli                        | 3336  | 3036                               | 91.0        | 2320                          | 69.5        | 2289                                  | 68.6        |
| Kvemo Kartli                        | 5162  | 4862                               | 94.2        | 4676                          | 90.6        | 4624                                  | 89.6        |
| Guria                               | 1042  | 1027                               | 98.6        | 1035                          | 99.3        | 1042                                  | 100.0       |
| Samtskhe – Javakheti                | 2678  | 2162                               | 80.7        | 2210                          | 82.5        | 2090                                  | 78.0        |
| Mtskheta – Mtianeti                 | 559   | 541                                | 96.8        | 521                           | 93.2        | 445                                   | 79.6        |
| Racha – Lechkhumi and Kvemo Svaneti | 197   | 121                                | 61.4        | 141                           | 71.6        | 148                                   | 75.1        |
| <b>Georgia</b>                      | <b>55853</b>  | <b>52836</b>                       | <b>94.6</b> | <b>49357</b>                  | <b>88.4</b> | <b>48804</b>                          | <b>87.4</b> |

**Table 5.5 Livebirths and stillbirths according to the birth weight (data from maternity hospitals), Georgia, 2010**

|  | Total | 500 - 999 | 1000 - 1499 | 1500-2499 | 2500-3999 | 4000 + |
|--|-------|-----------|-------------|-----------|-----------|--------|
| Number of live births                  | 61646 | 123       | 335         | 2954      | 52807     | 5427   |
| % from the total number of livebirths  | 100   | 0.2       | 0.5         | 4.8       | 85.7      | 8.8    |
| Number of stillbirths                  | 682   | 279       | 101         | 140       | 147       | 15     |
| % from the total number of stillbirths | 100   | 40.9      | 14.8        | 20.5      | 21.6      | 2.2    |

**Table 5.6 Incidence of diseases in newborns (data from maternity hospitals), Georgia, 2010**

|   | Total number of cases | Incidence rate per 1000 live births |
|---|-----------------------|-------------------------------------|
| <b>All diseases</b>   | <b>5434</b>           | <b>88.1</b>                         |
| <i>Including</i>  |                       |                                     |
| Certain conditions originating in the perinatal period                    | 5023                  | 81.5                                |
| Including: Slow fetal growth and fetal malnutrition                       | 918                   | 14.9                                |
| Birth trauma  | 247                   | 4.0                                 |
| Including: Intracranial laceration and haemorrhage due to birth injury    | 56                    | 0.9                                 |
| Respiratory disorders specific to the perinatal period                    | 2192                  | 35.6                                |
| Including: Intrauterine hypoxia and birth asphyxia                        | 1097                  | 17.8                                |
| Respiratory distress syndrome of newborn                                  | 962                   | 15.6                                |
| Congenital pneumonia  | 11                    | 0.2                                 |
| Infections specific to the perinatal period                               | 379                   | 6.1                                 |
| Including: Sepsis of newborn  | 75                    | 1.2                                 |
| Haemorrhagic disorders of fetus and newborn                               | 124                   | 2.0                                 |
| Including: Fetal blood loss   | 5                     | 0.1                                 |
| Intracranial non-traumatic haemorrhage of fetus and newborn               | 89                    | 1.4                                 |
| Haematological disorders of fetus and newborn                             | 459                   | 7.4                                 |
| Including: Haemolytic disease of fetus and newborn due to isoimmunization | 373                   | 6.1                                 |
| Disseminated intravascular coagulation of fetus and newborn               | 1                     | 0.02                                |
| Other disorders of newborn cerebral status                                | 571                   | 9.3                                 |
| Other diseases originating in the perinatal period                        | 133                   | 2.2                                 |
| Congenital abnormalities  | 326                   | 5.3                                 |
| Other diseases of newborn   | 85                    | 1.4                                 |

**Table 5.7 Essential data on breastfeeding, Georgia, 2009 – 2010**

|   | 2009                              |  | 2010                              |  |
|---|-----------------------------------|--|-----------------------------------|--|
|   | Total number of breastfed infants | % from the total number of live births | Total number of breastfed infants | % from the total number of live births |
| <i>Data collected from the maternity hospitals</i>        |                                   |  |                                   |  |
| Breastfeeding initiated during the first hour after birth | 41411                             | 67.4                                   | 42525                             | 69.0                                   |
| Breastfeeding initiated in 1-8 hours after birth          | 12334                             | 20.1                                   | 11478                             | 18.6                                   |
| Breastfeeding initiated in 8-24 hours after birth         | 4081                              | 6.6                                    | 3842                              | 6.2                                    |
| Total number of the breastfed newborns                    | 59960                             | 97.5                                   | 60090                             | 97.5                                   |
| <i>Data collected from the children polyclinics</i>       |                                   |  |                                   |  |
| Newborns breastfed at the age of 3 months                 | 22535                             | 36.7                                   | 28156                             | 45.5                                   |

**Table 5.8 Caesarean sections number, rate and structure, Georgia, 2009 – 2010**

|  | 2009             |                            |                         | 2010            |                            |                         |
|--|------------------|----------------------------|-------------------------|-----------------|----------------------------|-------------------------|
|  | Number of cases  | Ratio per 1000 live births | % from the total number | Number of cases | Ratio per 1000 live births | % from the total number |
| <b>All types of caesarean sections</b> | <b>17722</b>     | <b>287.3</b>               | <b>100</b>              | <b>19442</b>    | <b>314.1</b>               | <b>100</b>              |
|  | <i>Including</i> |                            |                         |                 |                            |                         |
| Scheduled                              | 8498             | --                         | 48.0                    | 10240           | --                         | 52.6                    |
| Urgent                                 | 9224             | --                         | 52.0                    | 9212            | --                         | 47.4                    |

**Table 5.9 Caesarean sections number and indicators, Georgia, 2010**

|                                     | Number of deliveries | Total number of caesarean sections | % from the total number of deliveries | Ratio per 1000 live births |
|-------------------------------------|----------------------|------------------------------------|---------------------------------------|----------------------------|
| Ajara                               | 6075                 | 2141                               | 35.2                                  | 351.7                      |
| Tbilisi                             | 26469                | 8162                               | 30.8                                  | 309.3                      |
| Kakheti                             | 3738                 | 1104                               | 29.5                                  | 294.8                      |
| Imereti                             | 9197                 | 3574                               | 38.9                                  | 388.1                      |
| Samegrelo and Zemo Svaneti          | 4340                 | 1854                               | 42.7                                  | 424.9                      |
| Shida Kartli                        | 3394                 | 899                                | 26.5                                  | 265.2                      |
| Kvemo Kartli                        | 4914                 | 1122                               | 22.8                                  | 228.0                      |
| Guria                               | 1085                 | 307                                | 28.3                                  | 281.9                      |
| Samtskhe – Javakheti                | 2209                 | 175                                | 7.9                                   | 79.7                       |
| Mtskheta – Mtianeti                 | 432                  | 99                                 | 22.9                                  | 225.5                      |
| Racha – Lechkhumi and Kvemo Svaneti | 75                   | 5                                  | 6.7                                   | 66.7                       |
| <b>Georgia</b>                      | <b>61928</b>         | <b>19442</b>                       | <b>31.4</b>                           | <b>314.1</b>               |

**Table 5.10 Causes of maternal mortality, Georgia, 2010**

| causes of deaths  | ICD-X Codes   | Total number |
|---|---------------|--------------|
| <b>Died during pregnancy, delivery and puerperium</b>   |               | <b>12</b>    |
| <i>Including</i>  |               |              |
| Pregnancy with abortive outcome   | O00.x -O07.x  | 1            |
| Pre-eclampsia, unspecified  | O14.9         | 1            |
| Eclampsia in pregnancy  | O15.0         | 1            |
| Postpartum haemorrhage  | O72           | 1            |
| Shock during or following labor and delivery  | O75.1         | 2            |
| Puerperal sepsis  | O85           | 1            |
| Obstetrical blood-clot Embolism   | O88.2         | 2            |
| Diseases of the respiratory system complicating pregnancy, childbirth and the puerperium      | 099.5         | 2            |
| Including: Influenza caused by an identified virus  | 099.5 (J10.0) | 2            |
| Other specified diseases and conditions complicating pregnancy, childbirth and the puerperium | 099.8         | 1            |

Table 5.11

## Abortions and contraception, Georgia, 1995 – 2010

|             | Total number of live births | Abortions    |                          | Abortion ratio per 1000 live births | Number of intrauterine devices inserted | Number of women to whom hormonal contraception was prescribed |
|-------------|-----------------------------|--------------|--------------------------|-------------------------------------|---|---|
|             |                             | Total number | Including mini abortions |                                     |   |   |
| <b>1995</b> | 56341                       | 39538        | 7522                     | 715.2                               | 9538                                    | 5181  |
| <b>1996</b> | 53300                       | 30003        | 5867                     | 554.1                               | 10817                                   | 3699  |
| <b>1997</b> | 52851                       | 23403        | 5541                     | 447.6                               | 8171                                    | 4869  |
| <b>1998</b> | 49588                       | 21018        | 6806                     | 423.8                               | 9148                                    | 6276  |
| <b>1999</b> | 46827                       | 18306        | 6549                     | 390.9                               | 11539                                   | 9142  |
| <b>2000</b> | 46765                       | 14951        | 5414                     | 319.7                               | 9120                                    | 7865  |
| <b>2001</b> | 46006                       | 15008        | 5330                     | 326.2                               | 9032                                    | 8755  |
| <b>2002</b> | 45033                       | 13908        | 5143                     | 308.8                               | 8252                                    | 8143  |
| <b>2003</b> | 44093                       | 13834        | 5183                     | 313.7                               | 9084                                    | 9340  |
| <b>2004</b> | 46373                       | 17210        | 6552                     | 371.1                               | 9047                                    | 10996   |
| <b>2005</b> | 47022                       | 19734        | 6710                     | 419.7                               | 9643                                    | 10783   |
| <b>2006</b> | 47856                       | 21204        | 7478                     | 443.1                               | 7581                                    | 10742   |
| <b>2007</b> | 49476                       | 20644        | 7583                     | 417.3                               | 7548                                    | 9541  |
| <b>2008</b> | 56025                       | 22062        | 7662                     | 393.8                               | 6554                                    | 12171   |
| <b>2009</b> | 61677                       | 24311        | 8361                     | 394.2                               | 6408                                    | 10324   |
| <b>2010</b> | <b>61901</b>                | <b>25585</b> | <b>10621</b>             | <b>413.3</b>                        | <b>7528</b>                             | <b>20620</b>  |

Table 5.12

## Abortions by the age groups, Georgia, 2010

|   | All ages      | Age groups  |               |               |               |               |             |
|---|---------------|-------------|---------------|---------------|---------------|---------------|-------------|
|   |               | <15         | 15-19         | 20-29         | 30-39         | 40-44         | >45         |
| <b>Total number</b>   | <b>25585</b>  | <b>14</b>   | <b>1770</b>   | <b>12766</b>  | <b>9262</b>   | <b>1636</b>   | <b>137</b>  |
| <i>Indicator</i>  | <b>2186.8</b> | <b>11.3</b> | <b>1091.2</b> | <b>3613.4</b> | <b>2889.0</b> | <b>1052.8</b> | <b>76.8</b> |
| <i>Including</i>  |               |             |               |               |               |               |             |
| Spontaneous abortions   | 3190          | 8           | 271           | 1620          | 1063          | 206           | 22          |
| Induced abortions   | 21503         | 6           | 1438          | 10729         | 7851          | 1368          | 111         |
| Gestational age less than 12 weeks                              | 21412         | 6           | 1432          | 10686         | 7814          | 1363          | 111         |
| Mini abortions (Gestational age less than 5 weeks)              | 10620         | 3           | 635           | 5222          | 3995          | 704           | 61          |
| Gestational age 12-22 weeks                                     | 91            | 0           | 6             | 43            | 37            | 5             | 0           |
| Number of the first pregnancies terminated by induced abortions | 498           | 3           | 82            | 310           | 98            | 5             | 0           |

**Table 5.13 Essential data on reproductive health\*, Georgia, 2010**

|                                     | Examinations |              |             | From the total number of encounters |             |            |                              |                 |
|-------------------------------------|--------------|--------------|-------------|-------------------------------------|-------------|------------|------------------------------|-----------------|
|                                     | Both sexes   | Females      | Males       | Due to infertility                  |             |            | Due to climacteric (females) | Due to abortion |
|                                     |              |              |             | Both sexes                          | Females     | Males      |                              |                 |
| Ajara                               | 3176         | 2925         | 251         | 186                                 | 177         | 9          | 257                          | 264             |
| Tbilisi                             | 17740        | 17342        | 398         | 2911                                | 2747        | 164        | 1073                         | 263             |
| Kakheti                             | 1677         | 1590         | 87          | 59                                  | 59          | 0          | 80                           | 93              |
| Imereti                             | 10452        | 9334         | 1118        | 696                                 | 653         | 43         | 1010                         | 589             |
| Samegrelo and Zemo Svaneti          | 5112         | 5038         | 74          | 213                                 | 213         | 0          | 366                          | 11              |
| Shida Kartli                        | 3062         | 2945         | 117         | 89                                  | 86          | 3          | 169                          | 239             |
| Kvemo Kartli                        | 3623         | 3438         | 185         | 222                                 | 209         | 13         | 278                          | 711             |
| Guria                               | 831          | 730          | 101         | 72                                  | 72          | 0          | 120                          | 106             |
| Samtskhe – Javakheti                | 416          | 385          | 31          | 191                                 | 191         | 0          | 0                            | 122             |
| Mtskheta – Mtianeti                 | 188          | 188          | 0           | 43                                  | 43          | 0          | 58                           | 1               |
| Racha – Lechkhumi and Kvemo Svaneti | 813          | 813          | 0           | 7                                   | 7           | 0          | 61                           | 11              |
| <b>Georgia</b>                      | <b>48521</b> | <b>46159</b> | <b>2362</b> | <b>4718</b>                         | <b>4486</b> | <b>232</b> | <b>3525</b>                  | <b>2412</b>     |

**Table 5.14 Essential data on reproductive health\*, Georgia, 2010**

|                                     | Encounters for a contraception method selection |              |             |
|-------------------------------------|---|--------------|-------------|
|                                     | Both sexes                                      | Females      | Males       |
| Ajara                               | 865   | 786          | 79          |
| Tbilisi                             | 2865  | 2784         | 81          |
| Kakheti                             | 508   | 467          | 41          |
| Imereti                             | 4831  | 4052         | 779         |
| Samegrelo and Zemo Svaneti          | 1489  | 1416         | 73          |
| Shida Kartli                        | 315   | 312          | 3           |
| Kvemo Kartli                        | 1207  | 1035         | 172         |
| Guria                               | 241   | 140          | 101         |
| Samtskhe – Javakheti                | 86  | 55           | 31          |
| Mtskheta – Mtianeti                 | 16  | 16           | 0           |
| Racha – Lechkhumi and Kvemo Svaneti | 10  | 10           | 0           |
| <b>Georgia</b>                      | <b>12584</b>                                    | <b>11224</b> | <b>1360</b> |

**Table 5.15 Child deaths registered by health facilities, Georgia, 2010**

|                                     | Deaths in children under 15 years |                                  |                            |                             | Including                  |                                     |                            |                             |                        |                                     |                            |                             |
|-------------------------------------|-----------------------------------|----------------------------------|----------------------------|-----------------------------|----------------------------|-------------------------------------|----------------------------|-----------------------------|------------------------|-------------------------------------|----------------------------|-----------------------------|
|                                     |                                   |                                  |                            |                             | Deaths in children under 1 |                                     |                            |                             | Death children under 5 |                                     |                            |                             |
|                                     | Total number of deaths            | Mortality rate per 1000 children | % of the in-patient deaths | % of the out-patient deaths | Total number of deaths     | Mortality rate per 1000 live births | % of the in-patient deaths | % of the out-patient deaths | Total number of deaths | Mortality rate per 1000 live births | % of the in-patient deaths | % of the out-patient deaths |
| Ajara                               | 69                                | 104.5                            | 82.6                       | 17.4                        | 55                         | 9.0                                 | 92.7                       | 7.3                         | 62                     | 10.2                                | 87.1                       | 12.9                        |
| Tbilisi                             | 476                               | 242.0                            | 99.6                       | 0.4                         | 407                        | 15.4                                | 99.8                       | 0.2                         | 446                    | 16.9                                | 99.6                       | 0.4                         |
| Kakheti                             | 37                                | 53.7                             | 62.2                       | 37.8                        | 28                         | 7.5                                 | 78.6                       | 21.4                        | 33                     | 8.8                                 | 66.7                       | 33.3                        |
| Imereti                             | 190                               | 159.3                            | 96.3                       | 3.7                         | 170                        | 18.5                                | 99.4                       | 0.6                         | 181                    | 19.7                                | 97.2                       | 2.8                         |
| Samegrelo and Zemo Svaneti          | 22                                | 27.2                             | 63.6                       | 36.4                        | 16                         | 3.7                                 | 81.3                       | 18.8                        | 17                     | 3.9                                 | 76.5                       | 23.5                        |
| Shida Kartli                        | 36                                | 67.9                             | 75.0                       | 25.0                        | 27                         | 8.0                                 | 92.6                       | 7.4                         | 31                     | 9.1                                 | 83.9                       | 16.1                        |
| Kvemo Kartli                        | 41                                | 48.0                             | 41.5                       | 58.5                        | 20                         | 4.1                                 | 85.0                       | 15.0                        | 38                     | 7.7                                 | 44.7                       | 55.3                        |
| Guria                               | 3                                 | 12.6                             | 66.7                       | 33.3                        | 2                          | 1.8                                 | 100.0                      | 0                           | 2                      | 1.8                                 | 100.0                      | 0                           |
| Samtskhe – Javakheti                | 18                                | 50.0                             | 61.1                       | 38.9                        | 14                         | 6.4                                 | 78.6                       | 21.4                        | 18                     | 8.2                                 | 61.1                       | 38.9                        |
| Mtskheta – Mtianeti                 | 1                                 | 5.4                              | 0                          | 100                         | 1                          | 2.3                                 | 0                          | 100.0                       | 1                      | 2.3                                 | 0                          | 100.0                       |
| Racha – Lechkhumi and Kvemo Svaneti | 1                                 | 12.3                             | 0                          | 100                         | 1                          | 13.3                                | 0                          | 100.0                       | 1                      | 13.3                                | 0                          | 100.0                       |
| <b>Georgia</b>                      | <b>894</b>                        | <b>118.2</b>                     | <b>90.4</b>                | <b>9.6</b>                  | <b>741</b>                 | <b>12.0</b>                         | <b>96.6</b>                | <b>3.4</b>                  | <b>830</b>             | <b>13.4</b>                         | <b>92.2</b>                | <b>7.8</b>                  |

\* Encounters to out-patient facilities due to reproductive health problems, excluding antenatal care visits

**Table 5.16 Incidence of diseases in children under 1 and under 5, Georgia, 2010**

|   | Children under 1          |                                 | Children under 5          |                                      |
|---|---------------------------|---------------------------------|---------------------------|--------------------------------------|
|   | Total Number of new cases | Incidence rate per 1000 infants | Total Number of new cases | Incidence rate per 1000 children < 5 |
| <b>All diseases</b>   | <b>68540</b>              | <b>110192.9</b>                 | <b>226395</b>             | <b>84665.3</b>                       |
|   | <i>Including</i>          |                                 |                           |                                      |
| Certain infectious and parasitic diseases                             | 4419                      | 7104.5                          | 24137                     | 9026.6                               |
| Neoplasms   | 21                        | 33.8                            | 45                        | 16.8                                 |
| Diseases of the blood and blood-forming organs                        | 2621                      | 4213.8                          | 7305                      | 2731.9                               |
| Endocrine, nutritional and metabolic diseases                         | 2563                      | 4120.6                          | 4365                      | 1632.4                               |
| Mental and behavioural disorders                                      | 15                        | 24.1                            | 73                        | 27.3                                 |
| Diseases of the nervous system  | 4577                      | 7358.5                          | 7501                      | 2805.2                               |
| Diseases of the eye and adnexa  | 2338                      | 3758.8                          | 5948                      | 2224.4                               |
| Diseases of the ear and mastoid process                               | 2225                      | 3577.2                          | 6346                      | 2373.2                               |
| Diseases of the circulatory system                                    | 138                       | 221.9                           | 464                       | 173.5                                |
| Diseases of the respiratory system                                    | 40763                     | 65535.4                         | 146671                    | 54850.8                              |
| Diseases of the digestive system                                      | 2079                      | 3342.4                          | 6301                      | 2356.4                               |
| Diseases of the skin and subcutaneous tissue                          | 2037                      | 3274.9                          | 6046                      | 2261.0                               |
| Diseases of the musculoskeletal system and connective tissue          | 212                       | 340.8                           | 847                       | 316.8                                |
| Diseases of the genitourinary system                                  | 1210                      | 1945.3                          | 3474                      | 1299.2                               |
| Certain conditions originating in the perinatal period                | 1401                      | 2252.4                          | 1401                      | 523.9                                |
| Congenital malformations, deformations and chromosomal abnormalities  | 813                       | 1307.1                          | 1377                      | 515.0                                |
| Symptoms, signs and abnormal clinical and laboratory findings         | 741                       | 1191.3                          | 2140                      | 800.3                                |
| Injuries, poisoning and other certain consequences of external causes | 367                       | 590.0                           | 1954                      | 730.7                                |

**Table 5.17 In-patient surgical operations on female genital organs and obstetrical-gynecological operations, Georgia, 2009 – 2010**

|  | 2009             |                        | 2010         |                        |
|--|------------------|------------------------|--------------|------------------------|
|  | Total number     | Case fatality rate (%) | Total number | Case fatality rate (%) |
| <b>Total number of operations on the female genital organs</b> | <b>9722</b>      | <b>0.08</b>            | <b>9861</b>  | <b>0.03</b>            |
|  | <i>Including</i> |                        |              |                        |
| Endometrectomy (excluding abortions)                           | 2395             | 0                      | 2186         | 0                      |
| Female sterilization   | 192              | 0                      | 314          | 0                      |
| Amputation of uterus   | 1235             | 0.08                   | 1337         | 0.15                   |
| Extirpation of uterus  | 3570             | 0.20                   | 3606         | 0.03                   |
| Resection of ovary   | 851              | 0                      | 939          | 0                      |
| Ovarectomy   | 657              | 0                      | 437          | 0                      |
| Operations on external genital organs with tissue extirpation  | 177              | 0                      | 190          | 0                      |
| <b>Obstetrical and gynecological surgery</b>                   | <b>35535</b>     | <b>0.01</b>            | <b>38262</b> | <b>0</b>               |
|  | <i>Including</i> |                        |              |                        |
| Due to ectopic pregnancy                                       | 1219             | 0.1                    | 1082         | 0                      |
| Forceps  | 81               | 0                      | 73           | 0                      |
| Vacuum extraction  | 149              | 0                      | 186          | 0                      |
| Cesarean section   | 17722            | 0.02                   | 19442        | 0                      |
| Operations of fetal destruction                                | 40               | 0                      | 34           | 0                      |
| Abortion   | 16192            | 0                      | 16220        | 0                      |